

alber®

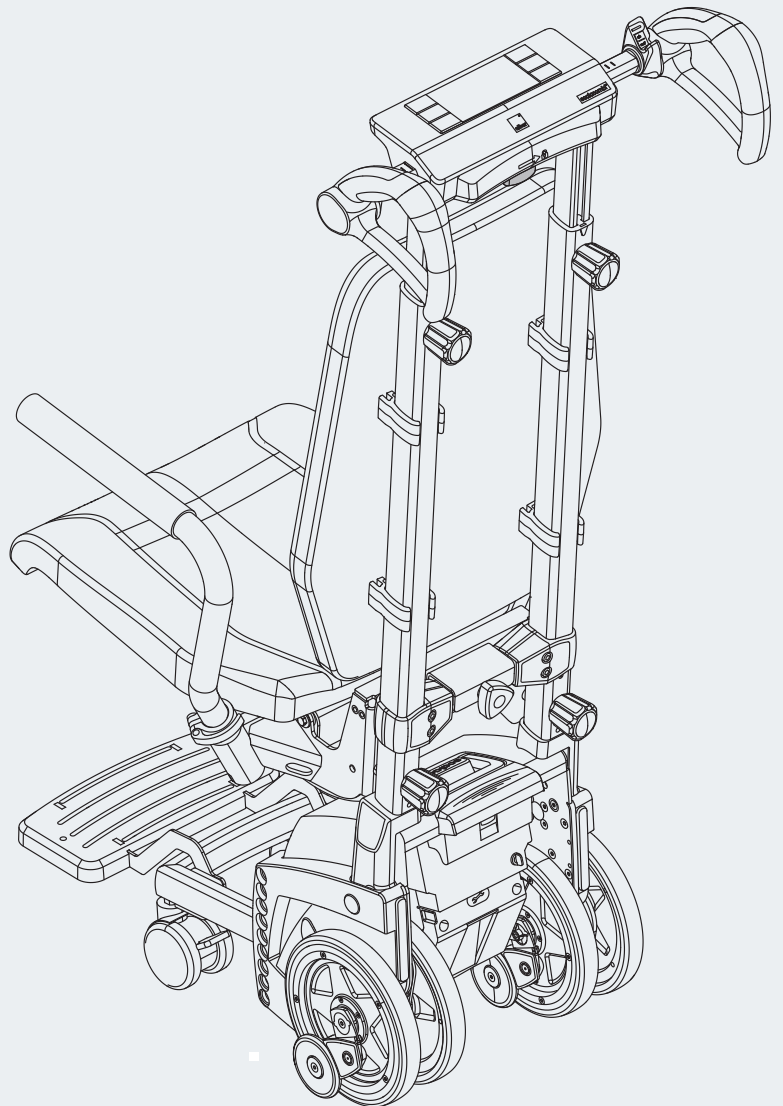
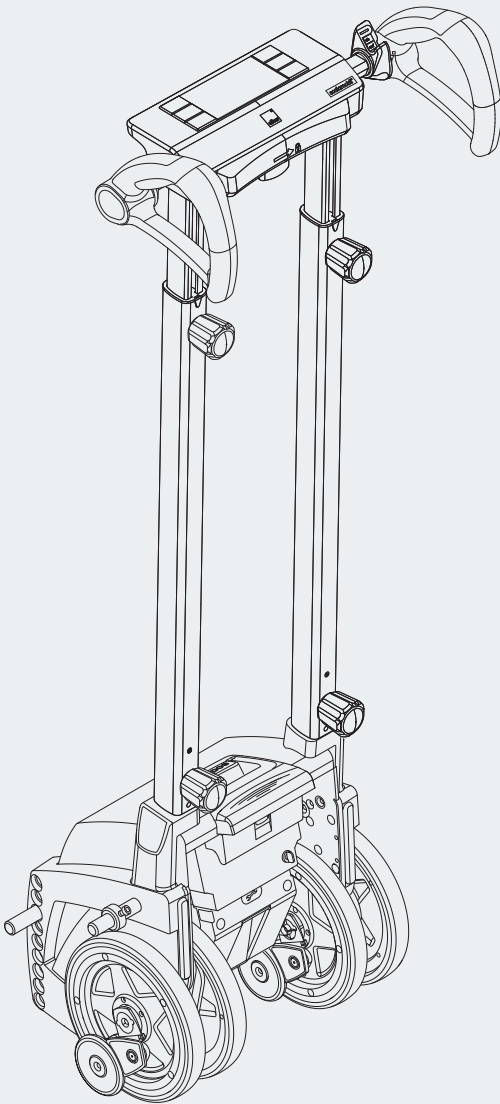
Climbing stairs the easy way.

scalamobil® scalacombi®

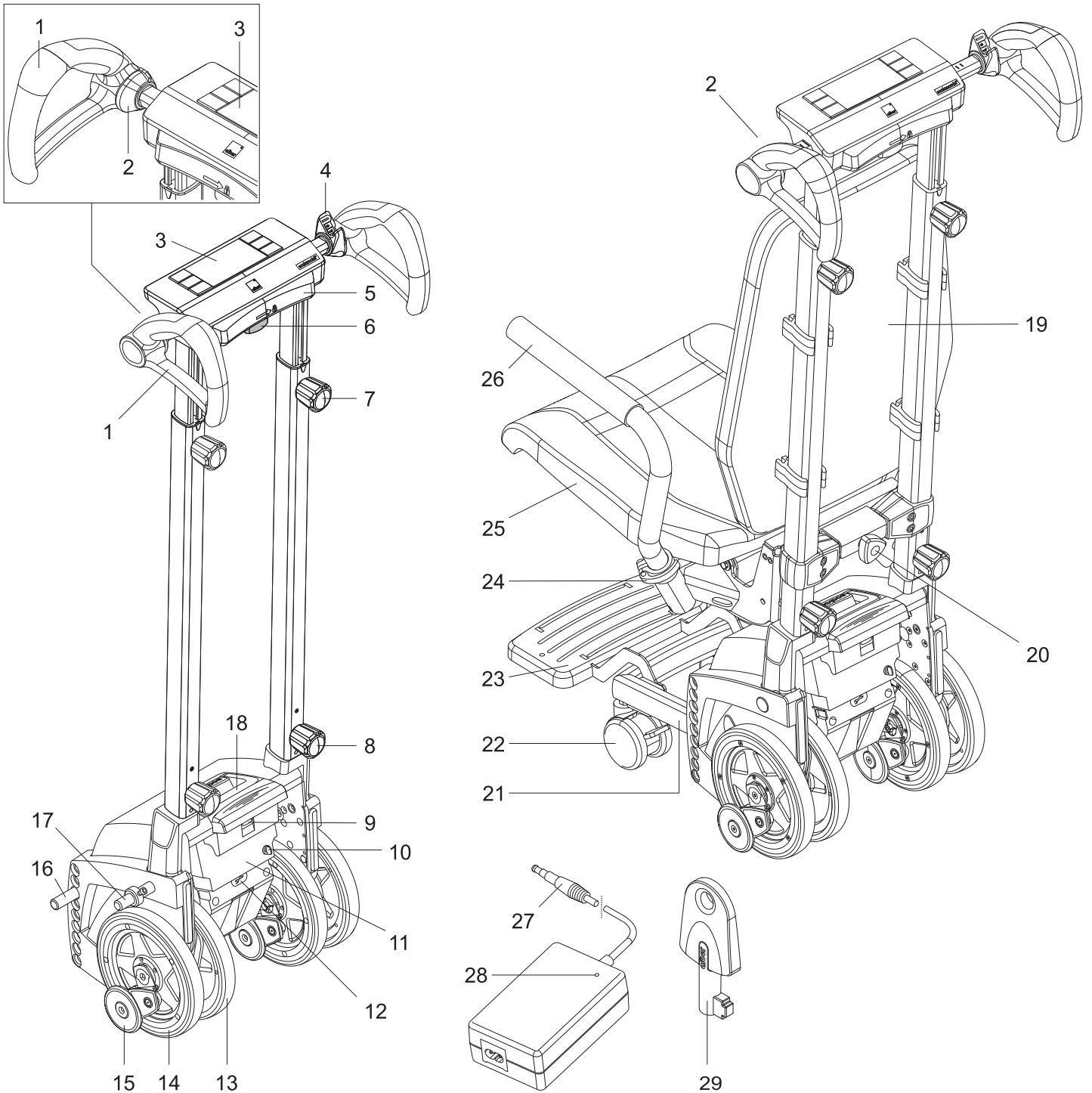
Operating manual

scalamobil S45/scalacombi S46

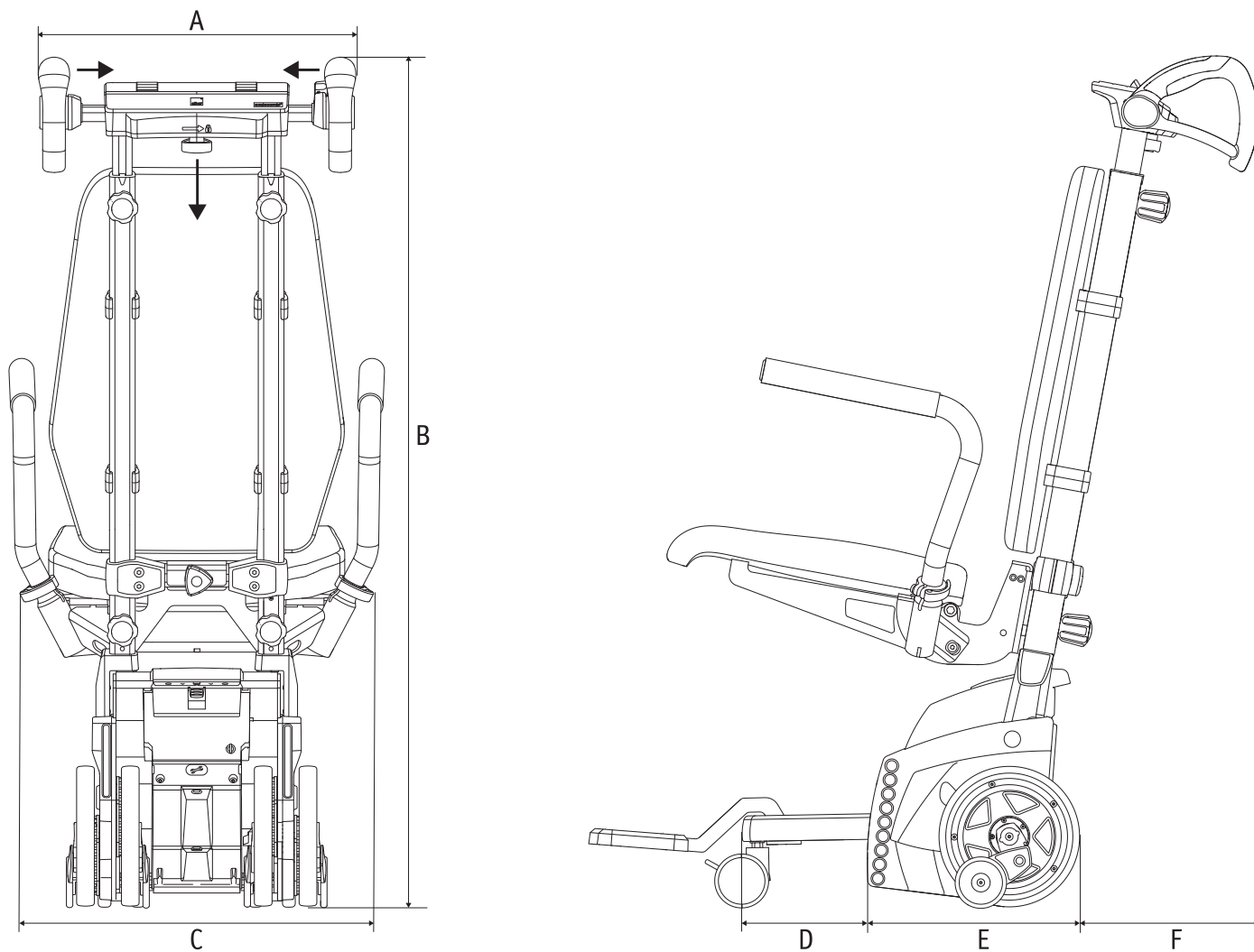
EN



CE | UK
CA



	Handlebar (S45/S46)		Drive unit (S45/S46)		scalacombi S46
1	Handle	9	Battery pack locking mechanism	19	Backrest
2	Emergency stop switch	10	Charger socket	20	Seat knob
3	Display with switches	11	Battery pack	21	Fixed foot support
4	Drive switch	12	USB socket cover	22	Castor
5	Support pad	13	Inner wheel	23	Footrest
6	Width adjustment knob	14	Outer wheel	24	Clamp
7	Height adjustment knob	15	Brake roller	25	Seat
8	Lower knob	16	Rod (S45 only)	26	Armrest
		17	Upper bolt (S45 only)		Accessories (S45/S46)
		18	Carry handle	27	Charging plug
				28	LED indicator on the charger
				29	Key for immobiliser



	S45	S46
A:	430 mm	430 mm
B:	1,167 mm	1,167 mm
C:	---	500 mm
D:	---	180 mm
E:	297 mm	297 mm
F:	112 mm	112 mm

This operating manual is available for download on our website: www.alber.de. If you require a large-print version, please contact Alber Customer Service or download the operating manual as a PDF file from our website. You can view this file in a larger format on your screen.



46.0001.4.02.01
Version: 2024-09-05

This operating manual provides you with information about the products

- scalamobil S45 (standard stair climber)
 - scalacombi S46 (standard stair climber with integrated seat)
- all referred to in the following as the "stair climber".



The diagrams contained in this operating manual may deviate from the product supplied to you.



Before putting the stair climber into operation, carefully read this operating manual for the stair climber. It contains the necessary information for operating the device as well as further safety instructions for ascending and descending stairs.

Contents

1. Introduction	2		
1.1 Intended purpose	2		
1.2 Important safety instructions	2		
1.3 Proper use of the stair climber and handling instructions	2		
1.4 Signs and symbols	3		
1.5 Permissible operating conditions / operating locations	5		
1.6 Standard scope of delivery	5		
1.7 Optional accessories	5		
1.8 Stairs suitable for scalamobil	6		
1.8.1 Dimensions	6		
1.8.2 Climbing spiral stairs	7		
1.8.3 Climbing grating stairs	8		
1.8.4 Climbing glass stairs	8		
2. Commissioning	9		
2.1 Adjusting the stair climber to the operator	10		
2.2 Adjusting the stair climber to the stairs to be climbed	10		
2.3 scalamobi: Adjusting armrests	10		
2.4 scalamobi: Setting up the footrest and seat, releasing the brakes	11		
2.5 Selecting the drive program	11		
2.5.1 Activating/deactivating the “auto” drive program	11		
2.5.2 Activating/deactivating the “assist” drive program	12		
2.5.3 Activating/deactivating the “manual” drive program	12		
2.6 Climbing functions	13		
2.6.1 “Soft Step” function	13		
2.6.2 Activating /deactivating the “navigate obstacle” function	13		
2.6.3 “Step monitoring” function	14		
2.6.4 “Lift” function	14		
2.6.5 “Detect travel direction” function	14		
2.7 Control elements on the handle	14		
2.7.1 Switching on the main switch/stair climber	14		
2.7.2 Switching off the main switch/stair climber	15		
2.7.3 Emergency stop switch/stopping a movement	15		
2.7.4 Indications on the display and on the switches and their meaning	15		
2.7.5 Drive switch	16		
2.8 Carrying out the functional test	17		
2.8.1 Aligning the wheels manually (putting them in the wheel starting position)	18		
2.8.2 Checking and cleaning the brakes	18		
2.9 Attaching the scalamobil to the wheelchair - with quickpins	19		
2.9.1 Manual retraction	19		
2.9.2 Motorised retraction	19		
2.9.3 Inserting quickpins	20		
2.9.4 Removing the quickpins	20		
2.10 Attaching the scalamobil to the wheelchair with automatic locking	20		
2.10.1 Manual retraction	21		
2.10.2 Motorised retraction	21		
2.11 Removing the wheels from the wheelchair	21		
2.12 Removing the scalamobil from the wheelchair	22		
2.12.1 With quickpins	22		
2.12.2 With automatic locking	23		
2.13 scalamobi: Actuating the parking brakes of the castors	24		
3. Climbing stairs	24		
3.1 Ascending stairs in the “auto” drive program	24		
3.2 Ascending stairs in the “assist” drive program	26		
3.3 Ascending stairs in the “manual” drive program	27		
3.4 Descending stairs in the “auto” drive program	28		
3.5 Descending stairs in the “assist” drive program	29		
3.6 Descending stairs in the “manual” drive program	30		
3.7 Halting the scalamobil while climbing stairs	30		
3.8 Changing the direction of travel in the “auto” drive program	31		
3.9 Changing the direction of travel in the “assist” drive program	31		
3.10 Using the wheelchair with scalamobil attached	31		
3.11 Important note about stopping after climbing stairs	32		
3.12 Special warnings for climbing stairs	32		
4. Immobiliser	33		
4.1 Activating the immobiliser	33		
4.2 Deactivating the immobiliser	33		
5. Automatic shutdown	33		
6. Batteries	34		
6.1 Charging the battery pack	34		
6.2 Removing the battery pack	34		
6.3 Information about the batteries used / handling batteries correctly	35		
7. Transport and storage	35		
7.1 scalamobil: disassembly into individual components	36		
7.2 scalamobil: putting individual components together	36		
7.3 scalamobi: disassembly into individual components	37		
7.4 scalamobi: putting individual components together	39		
7.5 Storing the scalamobi in a space-saving manner	42		
7.6 Using the scalamobi after space-saving storage	42		
7.7 Instructions for storage and transport	42		
7.7.1 Important safety information	42		
7.7.2 Note on securing the device	42		
8. Indicators and error messages	43		
9. Troubleshooting in the event of a malfunction	43		
10. Safety instructions and hazard information	44		
10.1 General safety instructions and hazard information	44		
10.2 Safety instructions and hazard information on the stair climber	45		
11. Cleaning and care, maintenance, further use, storage and disposal	46		
11.1 Cleaning and care	46		
11.2 Maintenance	46		
11.3 Reuse	46		
11.4 Storage	47		
11.5 Disposal	47		
12. Warranty, guarantee and liability	47		
12.1 Warranty for defects	47		
12.2 Durability guarantee	47		
12.3 Liability	47		
13. Technical data	48		
14. Product labelling	49		
15. Product safety information	50		
16. Product service life	50		
17. Important legal information for the user of this product	50		
Appendix			
Securing and adjusting the headrest on the stair climber	51		
Adjusting the chest harness on the scalamobi	52		
Installing the chest harness on the scalamobi	53		
Installing the automatic lap belt on the scalamobi	55		
Installing the static lap belt on the scalamobi	57		

1. Introduction

1.1 Intended purpose

The scalamobil and the scalacombi are portable, battery-operated mobility aids. They are intended for transporting persons with limited ability to climb stairs on straight and spiral stairs. The stair climber is therefore used to transport persons who are unable to navigate stairs safely on their own due to physical limitations. These are generally persons who are wheelchair-dependent, for example due to spinal injuries or neurological diseases, or persons who still have residual mobility but can no longer climb stairs due to age, for example. An operator is required to operate the device.

1.2 Important safety instructions

For safety reasons, the mobile stair climber must only be operated by persons who

- have been instructed in its handling,
- can safely climb stairs backwards
- can support at least 20% of their own body weight
- have the physical and mental capacity to operate the device safely in all possible situations. The stair climber must therefore not be operated by persons who are visually impaired or blind, for example.

A one-to-one instruction session on handling and operating the device is included in the scope of delivery. Please contact your specialist dealer or Alber GmbH representative to arrange the session. The instruction is free of charge.

If you feel a little unsure about how to handle your stair climber, please contact your specialist dealer or an Alber agent for advice. In the event of a technical fault or failure, contact your specialist dealer or an Alber agent.

The performance of the stair climber can be adversely affected by electromagnetic fields that are produced by mobile phones, for example. Therefore switch off the stair climber if a mobile phone is used in its immediate vicinity. It is forbidden for the wheelchair user or the operator of the stair climber to use a mobile phone while climbing stairs.

Trips in the vicinity of strong electric interference fields should also be avoided, as in rare cases the function of the stair climber could be impaired.

Under certain circumstances, operation of the stair climber may interfere with other equipment, such as anti-shoplifting barriers in department stores.



It is prohibited to start up the stair climber before being instructed in how to use it. Contact your authorised specialist dealer or Alber agent for this instruction.



The requirements for the stair climber's user are stricter when climbing stairs than when pushing the wheelchair on flat ground; special attention must be paid and all the operating information included in this operating manual must be complied with.

1.3 Proper use of the stair climber and handling instructions

The stair climber is intended exclusively for transporting persons over stairs who have a limited ability to climb stairs; escalators and moving walkways must not be used. The stair climber must only be attached to and operated with wheelchairs that are listed in Alber's mounting database.

It is forbidden to make any technical modifications to the device. Do not attach any parts other than the accessories that have been approved for use. The stair climber must only be operated under the following conditions:

- Full compliance with the information, instructions and recommendations contained in this operating manual.
- The device is only operated by a person who has been instructed in its use
- No technical modifications have been made to the device by the user or by any third party.
- The person to be transported must be able to sit without the need for assistance.
- The operator must check whether it is necessary to use a lap belt and/or footstrap.
- During transport, the person to be transported must keep their arms and hands on the armrests of the wheelchair or stair climber or close to their body. This person must sit quietly and not make any frantic movements. This means that the stair climber must not be used if the person to be transported tends to move very erratically or might try to hold on to the banister or railing due to a neurological disorder, for example.

An instructed person is a person who has been instructed in the operation of the stair climber and in their tasks, and who has been made aware of the possible hazards associated with improper use of the device. The instruction session is provided by the authorised specialist dealer or by an Alber agent. It is strictly prohibited for any uninstructed or unqualified persons to operate the stair climber.

The stair climber must not be used for any transport purpose that contravenes its intended use. This applies in particular to all other types of load transport, such as transporting household objects up and down stairs.

Alber GmbH regards use of the stair climber for any of the following purposes as misuse:

- Use or operation of the device that contravenes the instructions and recommendations in this operating manual.
 - Exceeding the technical limits defined in this operating manual.
 - Technical modifications to the device.
 - Attachment and use of third-party parts and accessories that have not been manufactured or offered for use or approved by Alber.
- Alber GmbH accepts no liability for damage resulting from misuse of the device.

While being transported on stairs, the person sitting in the wheelchair or on the scalacombi must remain still. Please note that uncoordinated movements can occur when transporting persons with certain medical conditions. These can cause the stair climber's centre of gravity to shift during transport.

The person operating the device should be capable of reacting to such sudden movements of the person to be transported. It is therefore the responsibility of the person who has been instructed in how to operate the stair climber to decide whether it is safe to transport a person with specific medical conditions.

A sales representative or a specialist dealer must check whether the scalamobil S45 can be mounted on an existing wheelchair.

1.4 Signs and symbols

Important tips and information are identified in this operating manual as follows:



Indicates tips and special information.



**Warning against possible hazards to your safety and health, and indication of possible injury risks.
Warning against possible technical problems or damage.**

Observe these indications and warnings at all times to avoid injury to people and damage to the product.

When used in this operating manual, terms such as "in front of", "behind", "left", "right" etc. refer to the respective position from the point of view of the operator.

The symbols used on the labels (see chapter 14) and in some parts of this operating manual are explained below.



The stair climber and the corresponding off-board charger comply with the applicable sections of ISO 7176-28 and the EU Medical Devices Regulation (MDR) 2017/745.
The scalamobil is a Class I medical device.



This product bears the UKCA marking in accordance with Part II UK MDR 2002 (as amended) Class I.



Medical device



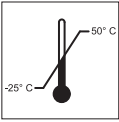
For information on how to dispose of the stair climber and its components, see chapter 11.4.



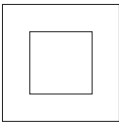
Protect the device from moisture.



Only use the device inside your home, not outdoors.



Indicates the temperature range in which the device can be used.



Protective insulation/appliance class 2

4



Complies with US and Canadian guidelines



Complies with Japanese safety standard for electrical appliances



Attention: observe accompanying documents.



Operation of the device: observe the operating manual.

This operating manual contains instructions, information and warnings relating to operation of the device and to charging the batteries. They are to be read and be given due consideration prior to commissioning the device or charging it for the first time.



Maximum weight of person that the device can accept as its load capacity: 140 kg (for scalamobil: 140 kg including wheelchair)



Specification of the manufacturing date



Name and address of the device manufacturer



Attention: Risk of crushing!

1.5 Permissible operating conditions / operating locations

The stair climber may only be used at temperatures between -25 °C and +50 °C to ascend or descend stairs. Under certain circumstances, the device is also suitable as a transfer system for short distances to and from stairs across on flat ground.

On stairs, the stair climber must never be released from your grip. Only in an emergency may it be put down to the rear.

The surface on which the stair climber is to be used must not be wet, slippery or waxed. Carpets and rugs must be secured to prevent them sliding.

The step height must not exceed 20 cm; the minimum step depth must not be less than 11 cm. Please observe the safety instructions and hazard information in chapter 10.



Especially when it is not in use, do not expose the stair climber to strong sunlight for long periods of time, if possible. This could cause the device to heat up and, in extreme cases, not be able to operate at full power. Plastic parts also age quicker under intense sunlight.

1.6 Standard scope of delivery

- One scalamobil or scalacombi, assembled and ready for use
- One charger and operating manual
- Key for immobiliser
- This operating manual

1.7 Optional accessories

- Headrest
- Lap belt (static or automatic)
- Shoulder harness (automatic)
- scalaport X7
- scalachair X3
- Isofix bracket
- Wheel transport bracket

We recommend using only original accessories supplied by Alber.

The stair climber is designed in such a way that it performs best when used together with Alber original accessories. Alber GmbH shall not be liable for damage to the product or accidents (e.g. fires) caused by a malfunction of non-original accessories or spare parts (e.g. a leak or a battery pack explosion). The warranty does not cover repairs that are necessary due to a malfunction of non-original accessories or spare parts. Alber GmbH will, however, carry out such repairs for you at a charge.

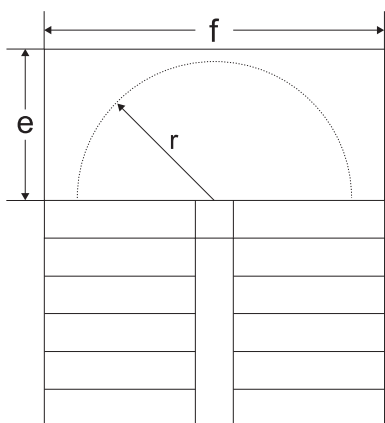
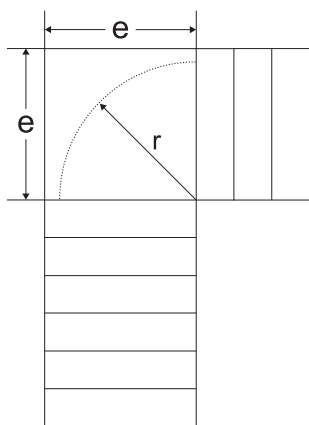
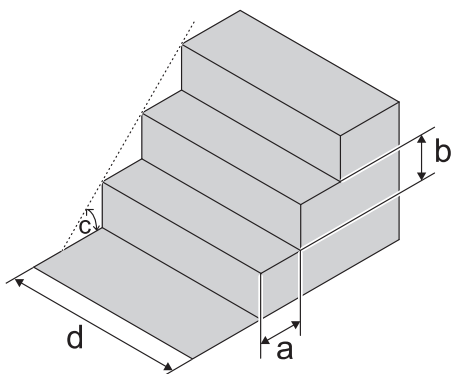
1.8 Stairs suitable for scalamobil

Please note that the specified dimensions of the stairs do not necessarily take into account the individual space requirements of the respective support person and the optimal inclination of the stair climber for the respective operator. The visit of an Alber sales representative or an authorised specialist dealer is therefore necessary and sensible as this will make it possible to accurately assess the spatial conditions and the suitability of the operator.

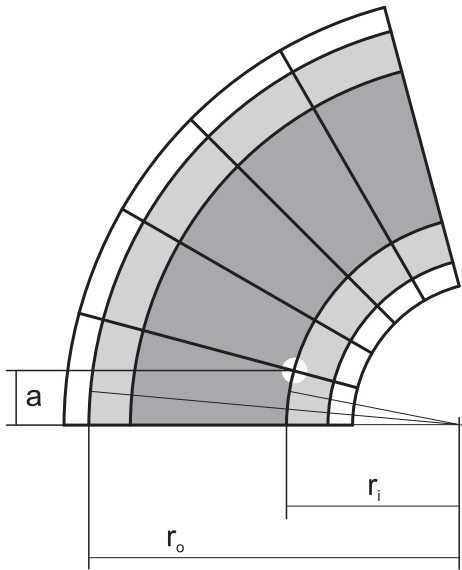
1.8.1 Dimensions

The stair climber can be used to climb stairs that meet the following requirements:

- Minimum step depth (a): 11 cm
- Maximum step height (b): 20 cm
- Maximum angle of climb (c): 61°
- Minimum width of straight stairs (d): 55 cm (*)
- Minimum landing (e) for U-shaped stairs: 1.00 metres (*)
- Minimum radius (r) of stairs with corner platform and U-shaped stairs: 1.00 metres (*)
- Recommended radius for climbing stairs with scalamobil and X3 chair: 0.91 metres
- Minimum dimension (e) of the platform for stairs with corner platform and U-shaped stairs: 1.00 metres (*)
- Minimum dimension (f) of the platform for U-shaped stairs: 2.00 metres (*)



(*) depending on the wheelchair used; stairs with a smaller radius may be possible – this must be checked on the stairs in question



1.8.2 Climbing spiral stairs

In principle, climbing spiral stairs requires the same operating procedures as described in chapters 3.1 to 3.6.

However, please note that when climbing a spiral staircase, the wheel on the inside travels a shorter distance than the wheel on the outside. Therefore, when climbing stairs, the scalamobil must also be rotated slightly according to the orientation of the spiral stairs, so that all the wheels rest against the edge of the step to be climbed next.

IMPORTANT NOTE ABOUT OPERATION

In order to safely climb spiral stairs, various prerequisites must be met:

1. Step depth and stair radius

At the narrowest point of the spiral stairs, where the outer wheels of the stair climber touch down on a step, the step must be at least $a = 11$ cm deep. The smallest radius of spiral stairs that are suitable for scalamobil, at which the step is at least $a = 11$ cm deep, is the minimum inner radius r_i . The minimum outer radius r_o of spiral stairs that are suitable for scalamobil is the minimum inner radius r_i plus the width of the wheelchair or plus the width of the scalamobil.

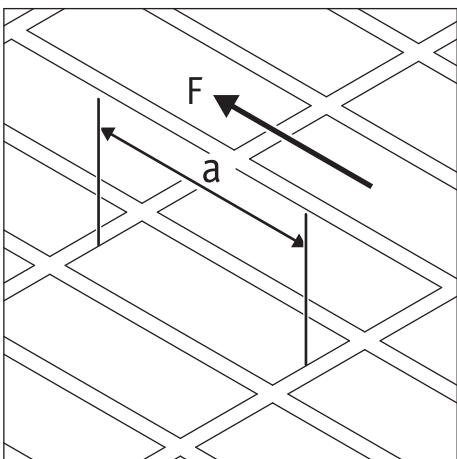
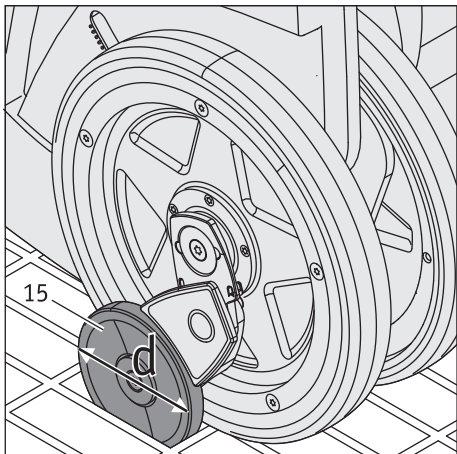
You must not use scalamobil on stairs with a lower step depth and lower radii.

2. Step width

The total width g of the scalamobil S45 also depends on the width of the wheelchair. The width of the scalamobil S46 is $g = 50$ cm. The width of the spiral stairs must be at least 1 m.



Alber GmbH recommends activating the “assist” drive program (see chapter 2.5.2) or the “manual” drive program (see chapter 2.5.3) when climbing spiral stairs, as these automatically interrupt the climbing process after successfully navigating each staircase step and the stair climber can then be aligned.



1.8.3 Climbing grating stairs

You should exercise particular caution when ascending or descending stairs where all or part of the steps are made of gratings.



Before any scheduled stair climbing, a test run must first be carried out with the scalamobil (without the wheelchair user!) or the scalamobi (without the person to be transported!). If the brakes jam, you must not use the scalamobil on the stairs. Likewise, the stair climber must not be turned under any circumstances, as this could cause the brakes to bend or break.



Never use the stair climber on wet or slippery grating. When using the stair climber on outdoor stairs, ensure that the grating is not covered in wet leaves or pieces of paper, as they make the steps slippery. Never use the stair climber on stairs that are obviously slippery. Never use the stair climber on stairs covered in ice.



In order to ensure the function of the brakes [15], the length [a] of the grating structure (measured in the direction of travel [F] of the stair climber) must not exceed the following values:

Brake [15] with wheel diameter $d = 72$ mm: $a =$ maximum 55 mm

Brake [15] with wheel diameter $d = 60$ mm: $a =$ maximum 50 mm

gratings that exceed the specified values must never be used with the stair climber.

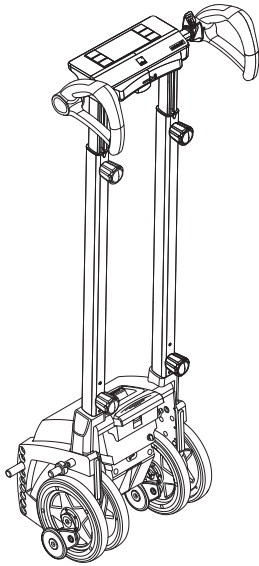


The sensors of the stair climber may not be able to detect gratings. Therefore, climb stairs with grating in the "manual" drive program (see chapter 2.5.3).

1.8.4 Climbing glass stairs



The stair climber sensors may not be able to detect glass stairs. Therefore, climb glass stairs in the "manual" drive program (see chapter 2.5.3).



2. Commissioning

The stair climber and any accessories you have ordered will be delivered to you in a ready-to-use state by an Alber agent or your specialist dealer. The handlebar on the device must also be adjusted to the height (handle height and handle width) of the operator (see chapter 2.1).

In addition, special brackets ([34] and [35]) have been fitted to your wheelchair into which the scalamobil must be inserted for operation (see chapters 2.9 and 2.10). The display of the stair climber is fitted with foil at the factory for protection. Peel off this foil before commissioning.

Before commissioning the stair climber, instruction in how to use the device is provided by your specialist dealer or an Alber GmbH agent. An integral part of this instruction is navigating stairs (ascending and descending) under the guidance and control of the instructor. You will quickly learn how to use the stair climber and how to climb stairs correctly and safely.

You will also be given this operating manual which, in addition to the technical information, contains important instructions for correct use of the stair climber. Therefore, read the operating manual carefully before using the stair climber on your own for the first time.

If you have any questions, please do not hesitate to contact your specialist dealer or an Alber agent.



The instruction in how to use the stair climber may only be provided by an authorised specialist dealer or by an Alber agent.



Only persons trained by the authorised specialist dealer or by an Alber agent are permitted to operate the stair climber.



Without prior instruction in its use, the stair climber must not be used. During the instruction session, you will also receive further information about ascending and descending stairs.



The brackets ([34] and [35]) of the scalamobil may only be installed on the wheelchair by Alber, an Alber agent, or the authorised specialist dealer.



Regularly check the brackets ([34] and [35]) of the scalamobil to ensure that they are firmly secured to the wheelchair. If a screw connection has become loose, contact your authorised specialist dealer or an Alber agent to have it retightened in the proper manner.



Check the fixation of the handle width adjustment using the knob [6].



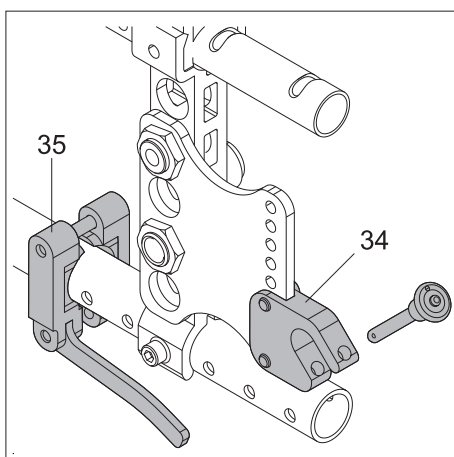
Before using the scalamobil, check whether the armrests [26] are secure, i.e. in the locked position (see chapter 2.3). Also check whether the armrests [26] are correctly mounted, see chapter 7.4.



Before using the scalamobil, check whether the seat is properly fixed in place.



The height of the scalamobil's footrest [23] can be adjusted to suit the length of the lower leg of the person to be transported. Please contact your specialist dealer if you wish to adjust the footrest [23].





2.1 Adjusting the stair climber to the operator

For correct operation and comfortable handling, the height of the handle [1] on the stair climber should be aligned approximately to the shoulder or chest height of the operator. In general, your specialist dealer or Alber agent will do this upon delivery of the stair climber.

If the height needs to be readjusted at a later stage, please proceed as follows:

- Loosen the knob [8] on the left and right side. In doing so, hold the handlebar to prevent it from dropping suddenly.
- Slide the handlebar up or down to the desired position (corresponding to the shoulder height of the operator, see also diagram to the left).
- Tighten the knob [8] on both sides again to a sufficient tightness.



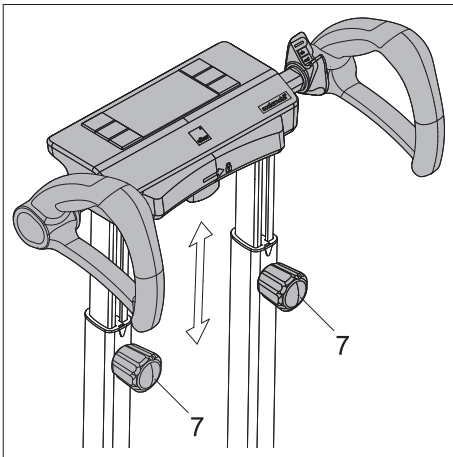
The stair climber is operated exclusively from the rear of the device (see diagram). Under no circumstances may the stair climber be operated from the front or from the side.



Regularly check the brackets ([34] and [35]) to ensure that they are firmly screwed onto the wheelchair. If a screw connection has become loose, contact your authorised specialist dealer or an Alber agent to have it retightened in the proper manner.



Take care of your hands and fingers when adjusting the height of the handlebar. Do not squeeze your hands or fingers into the profile tubes.



2.2 Adjusting the stair climber to the stairs to be climbed

As a rule, the two handles [1] are aligned centrally to the stair climber; the distance to each other is about 40 cm.

However, both handles can be individually adjusted as follows.

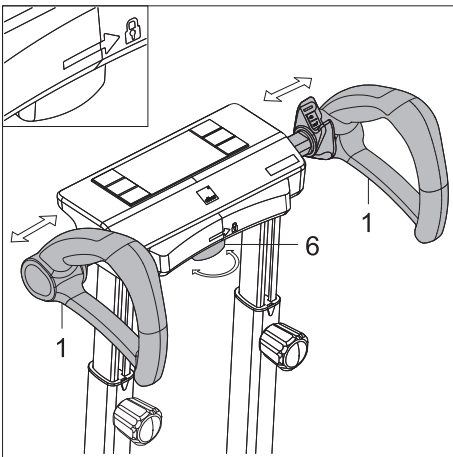
- Turn the width adjustment knob [6] clockwise to release it.
- Slide the left or right handle [1] to the desired position.
- Fix this position by turning the knob [6] counterclockwise to tighten it again.



After adjusting the handles, check that they are secure in their position. The handles [1] must not slide independently unless the knob [6] has been fully released.



An embossment on the support pad indicates the direction of rotation for tightening the knob [6].



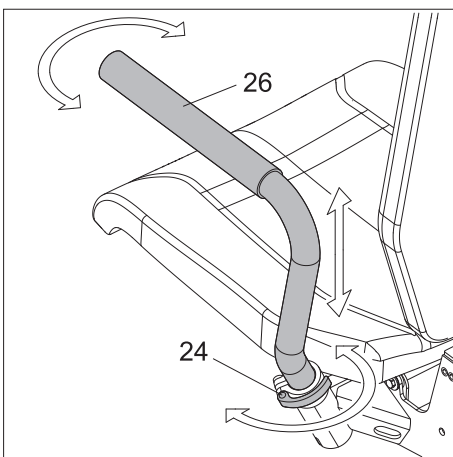
2.3 scalacombi: Adjusting armrests

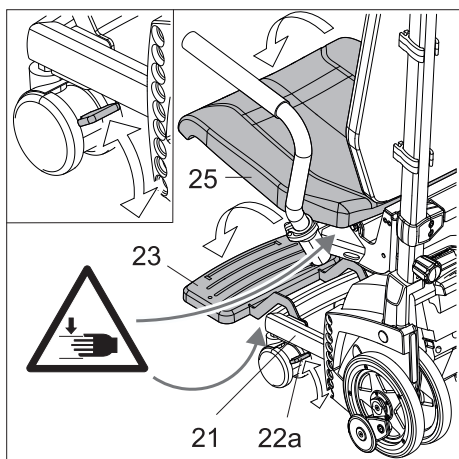
You can fix the armrests [26] of the scalacombi in different positions. For example, you can turn an armrest to the side so that the person to be transported can sit on the seat more easily.

- Loosen the clamp [24].
- Pull the armrest up about 1.5 cm from its locked position to allow you to turn the armrest.
- Hold the armrest at this height and rotate the armrest to the desired position.
- Tighten the clamp [24] again.
- Do the same with the second armrest as you did with the first.



The armrests can be rotated despite the clamps being tightened. Only in the locked position are the armrests firmly anchored and secured against rotational movements. Therefore, return the armrests to the locked position before using the scalacombi to climb stairs.





2.4 scalacombi: Setting up the footrest and seat, releasing the brakes

The footrest consists of two parts:

- The fixed foot support [21]. It offers support in very narrow stairwells.
- The footrest [23]. It can be folded or unfolded as required before climbing stairs.

- Fold the footrest [23] down if you want to climb a staircase with ample space.



Attention: Risk of crushing! A falling footrest [23] could trap your finger or hand. Do not let the footrest [23] fall into its end position.

- Fold the seat [25] down. The seat is stabilised in the lower position by its own weight.

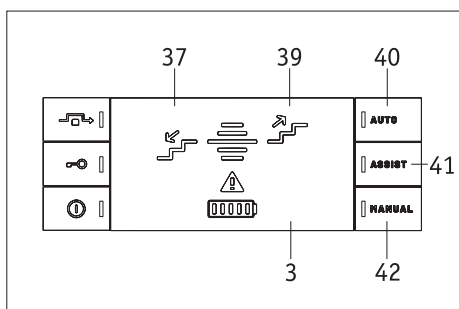


Attention: Risk of crushing! A falling seat [25] could trap your finger or hand. Do not let the seat [25] fall into its end position.

- Among other things, the brakes [22a] on the front wheels prevent the scalacombi from moving when adjusting the seating position. Release the brakes [22a] on the front wheels after adjusting the seating position.

2.5 Selecting the drive program

The stair climber has three different drive programs: auto, assist and manual.



2.5.1 Activating/deactivating the “auto” drive program

The “auto” drive program is intended for experienced operators who are navigating familiar stairs. The upward or downward movement of the device begins without you pressing the drive switch and if the following conditions are met:

- The stair climber is at the back or front of a step edge (depending on the direction of travel)
- The contact surface of the next step is of a sufficient size
- The stair climber is tilted.

In an emergency, you can stop the climbing process at any time and do so immediately by pressing the emergency stop switch [2]. The climbing process will normally continue until you press the emergency stop switch (see chapter 2.7.3).

In the “auto” drive program, the dynamic soft step drive function is active (see chapter 2.6.1), as well as the automatic detection of the desired direction of movement (ascend or descend) (see chapter 2.6.5). The selected direction of travel [37, 39] is shown on the display [3].



Attention: In the “auto” drive program, the movement starts automatically when the stair climber recognises that the prerequisites for ascending or descending are met.

- Press the “auto” switch [40] next to the display [3] to activate the “auto” drive program.
- After activating the “auto” drive program, a green LED lights up on the switch [40].
- Press the “assist” [30] or “manual” [31] switch to deactivate the “auto” drive program and select a different drive program.

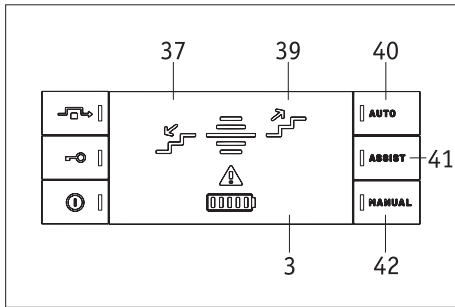
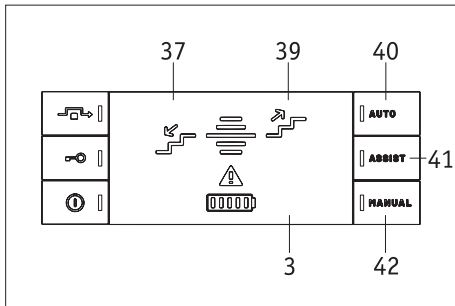
Attention: The four wheels of the stair climber must be roughly in alignment (in the initial wheel position) (see chapter 2.8.1) if you wish to change from the “manual” drive program to another drive program.

- Please note that the stair climber never starts in the “auto” drive program for safety reasons when it is switched on. After switching on again, the stair climber starts in the “assist” drive program if the “auto” drive program was selected before switching off.



The specialist dealer can block the “auto” drive program. The “auto” drive program can then not be selected. Reasons for blocking the drive program can be, for example:

- Lack of space
- Imbalance between the force of the operator and the weight of the person to be transported.



2.5.2 Locking / unlocking the “auto” drive program

If the “auto” drive program is locked, it cannot be selected.

If the “auto” drive program is not locked:

- Press and hold the “auto” [40], “assist” [41] and “manual” [41] drive program buttons simultaneously for 10 seconds to lock the “auto” drive program.

If the “auto” drive program is locked:

- Press and hold the “auto” [40], “assist” [41] and “manual” [41] drive program buttons simultaneously for 10 seconds to unlock the “auto” drive program.

2.5.3 Activating/deactivating the “assist” drive program

The “assist” drive program is intended for operators who are not experienced in using the stair climber and/or who are climbing stairs they are not familiar with. The upward or downward movement of the device begins when you press the drive switch [4] and the following conditions are met:

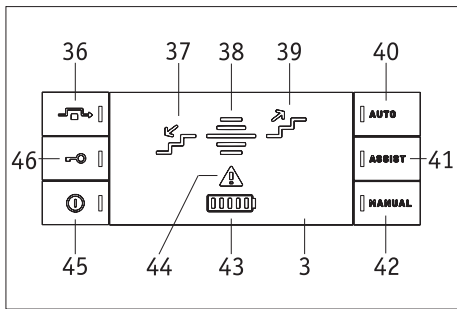
- The stair climber is at the front or back of a step edge (depending on the direction of travel)
- The contact surface of the next step is of a sufficient size
- The stair climber is tilted.

The upward or downward movement stops when you release the drive switch [4] or when you activate the emergency stop switch [2]. In the “assist” drive program, the dynamic soft step drive function is active (see chapter 2.6.1), as well as the automatic detection of the desired direction of movement (ascend or descend) (see chapter 2.6.5). While the stair climber ascends or descends, the selected direction of travel [37 or 39] is shown on the display [3].

- Press the “assist” switch [41] next to the display [3] to activate the “assist” drive program.
- After activating the “assist” drive program, a green LED lights up on the switch [41].
- Press the “auto” [40] or “manual” [42] switch to deactivate the “assist” drive program and select a different drive program.

Attention: The four wheels of the stair climber must be roughly in alignment (in the initial wheel position) (see chapter 2.8.1) if you wish to change from the “manual” drive program to another drive program.

The stair climber is set in motion when the drive switch is actuated, but switches off automatically after successfully navigating a step, even if the drive switch [2] is still being actuated. If you wish to continue climbing, you must release the drive switch and then press it again.



2.5.4 Activating/deactivating the “manual” drive program

The “manual” drive program is a type of emergency run. In the “manual” drive program, the operator can always climb stairs if, for example, faults have occurred in another drive program. The upward or downward movement of the device begins when you press the drive switch [4]. The upward or downward movement stops when you release the drive switch [4] or when you activate the emergency stop switch [2]. In the “manual” drive program, the static “soft step” climbing function is active (see chapter 2.6.1). The display [3] shows your current direction of travel [37, 39].

- Press the “manual” switch [42] next to the display [3] to activate the “manual” drive program.
- After activating the “manual” drive program, a green LED lights up on the switch [42] and, briefly, a red error LED [44] lights up on the display [3].
- Press the “auto” [40] or “assist” [41] switch to deactivate the “manual” drive program and select a different drive program.

Attention: The four wheels of the stair climber must be roughly in alignment (in the initial wheel position) (see chapter 2.8.1) if you wish to change from the “manual” drive program to another drive program.

The stair climber is set in motion when the drive switch is actuated [2], but switches off automatically after successfully navigating a step, even if the drive switch [2] is still being actuated. If you wish to continue climbing, you must release the drive switch and then press it again.



In the “manual” drive program, you only receive limited support from the sensors of the stair climber: the sensors for detecting the step depth, the step height, the direction of travel for the dynamic “soft step” are deactivated. It is only the sensor for the stair climber’s angle of inclination that is active.

2.6 Climbing functions

2.6.1 “Soft Step” function

The soft step function slows down the speed of the motor in the stair climber just before the wheels are placed on a step. As soon as the step has been climbed, the motor speed is again increased until the next step is reached.

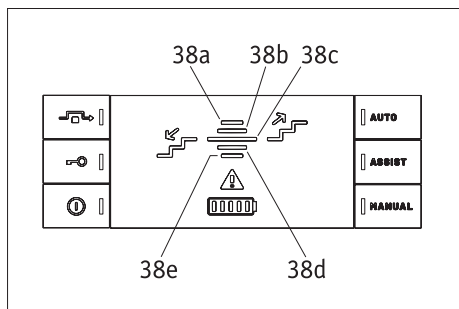
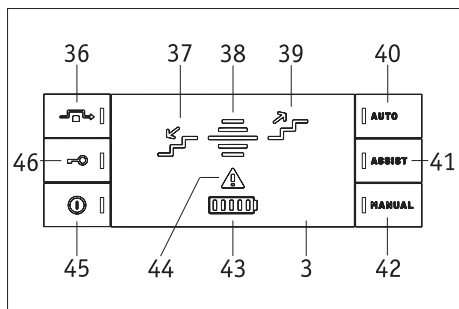
This movement process results in a softer placement of the wheels of the stair climber on the steps, enhancing the travel comfort of the person to be transported.

There are two types of soft step function: the dynamic soft step and the static soft step.

- The dynamic soft step is activated in the drive programs “auto” (see chapter 2.5.1) and “assist” (see chapter 2.5.2). The dynamic soft step function adapts to the permissible step height.
- The static soft step is activated in the “manual” drive program (see chapter 2.4.3). The static soft step function is designed for a step height of 18 cm. It does not automatically adjust to the step height.



With a static soft step, steps with a height other than 18 cm can be climbed, but the wheels of the stair climber then touch down harder on the steps.



2.6.2 Activating /deactivating the “navigate obstacle” function

In the “navigate obstacle” function, the stair climber can successfully navigate obstacles on the ground up to 1 cm high, e.g. door sills, forwards and backwards and with a full load.

To select/activate the “navigate obstacle” function, do the following:

- Make sure that the four wheels of the stair climber are in a line.
- Tilt the stair climber so that the green LED [38c] lights up on the display, i.e. that the stair climber is tilted to an angle of between 21.5 and 28.5 degrees (see chapter 2.6.4).
- Press the “navigate obstacle” switch [36] next to the display. As a result, the inner wheels [13] move slowly backwards. If the movement has stopped, the stair climber is in “navigate obstacle” mode.
- Tilt the stair climber further so that the front (outer) wheels lift off the ground.
- Pull or slide the stair climber over the obstacle.

To deactivate/terminate the “navigate obstacle” function, proceed as follows:

- Press the “navigate obstacle” switch [36] again next to the display [3]. The inner wheels [13] slowly move forward again, so that all four wheels are in line again.

or:

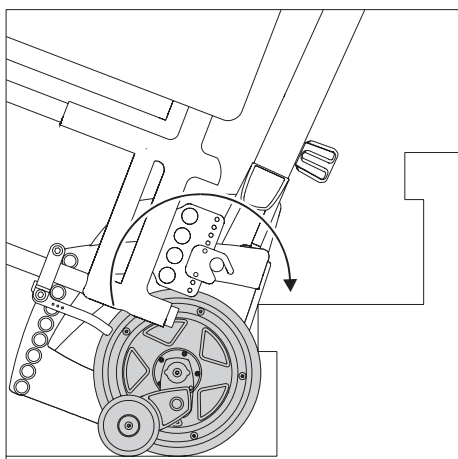
- Tilt the stair climber so that the red LED [38c] on the display [3] lights up, i.e. the stair climber is tilted to an angle of between 39 and 90 degrees or between 15 and -10 degrees (see chapter 2.5.4). The inner wheels [13] slowly move forward again, so that all four wheels are in line again.

2.6.3 “Step monitoring” function

The stair climber only allows climbing stairs if it is close enough to the front step edge (when descending) or the rear step edge (when ascending). The angle of inclination (see chapter 2.7.4) of the stair climber is also monitored. In addition, a check is performed to determine whether the step depth is at least 11 cm and the step height is at most 20 cm. The “step monitoring” function is activated in the “auto” and “assist” drive programs (see chapters 2.5.1 and 2.5.2).

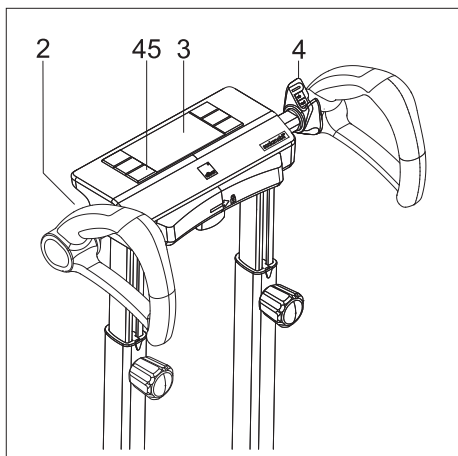
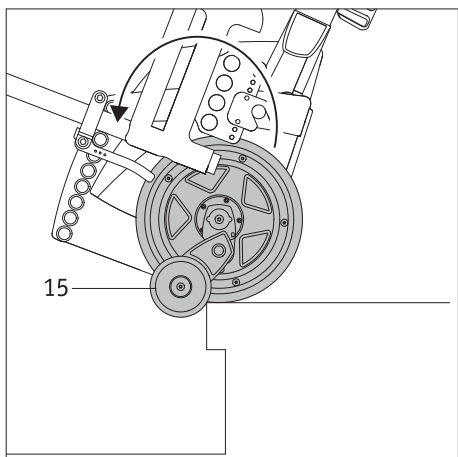
2.6.4 “Lift” function

The “lift” function is used to attach the scalamobil to the wheelchair with the help of its motor (without the operator’s muscle power), see chapters 2.9.2 and 2.10.2 (Motorised retraction). In addition, the “lift” function makes it possible to remove the wheels of the wheelchair after attaching the scalamobil to the wheelchair. For climbing stairs with the help of the scalamobil, it is absolutely necessary to remove the wheels of the wheelchair (see chapter 2.11).



2.6.5 “Detect travel direction” function

In the “detect travel direction” function, the stair climber detects the desired direction of travel, making operation more comfortable. The “detect travel direction” function is activated if the “auto” drive program (see chapter 2.5.1) or the “assist” drive program (see chapter 2.5.2) has been selected and the stair climber is in the correct position for the desired direction of travel. The selected direction of travel is shown on the display [3] in the form of an up arrow [28] or down arrow [26].



2.7 Control elements on the handle

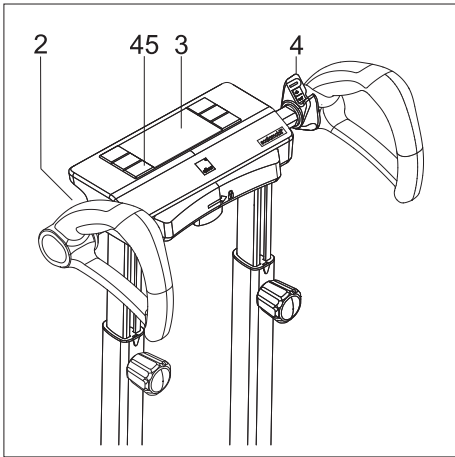
2.7.1 Switching on the main switch/stair climber

- Press the main switch [45] to turn on the stair climber.

After pressing the main switch, a function check is first carried out, whereby all display elements briefly light up on the display [3] and a sound can be heard. After the function check, the display [3] shows the current operating status. The main switch [45] lights up green continuously. The direction of travel is only displayed when the stair climber is at the edge of a step.

If the stair climber is not used after switching on, it will switch off automatically after 15 minutes (see chapter 5).

If the “assist” or “manual” drive program was selected before switching off the stair climber, the drive program in question is also active after switching on. If the “auto” drive program was selected before the stair climber was switched off, the “assist” drive program is active after the stair climber is switched on. For safety reasons, the “auto” drive program must be deliberately activated.



2.7.2 Switching off the main switch/stair climber

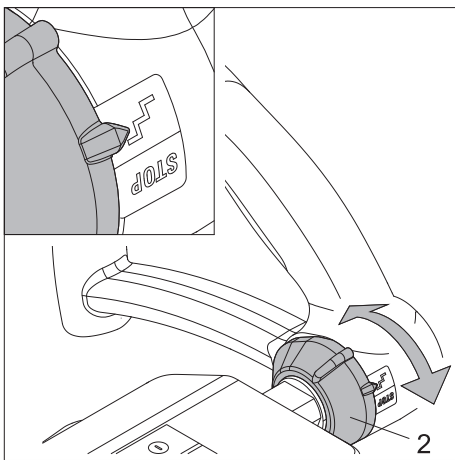
- If the stair climber is switched on: Press the main switch [45] to turn off the stair climber.
By switching off the stair climber, all displays on the display [3] go out. The main switch [45] also no longer lights up after switching off.



Do not hang any items of clothing, bags or other such objects on the handles, as these could impair or trigger the function of the control elements.



If the stair climber is switched off, its drive wheels are not automatically moved to a certain position. We recommend that the drive wheels are aligned with each other before switching off (see chapter 2.8.1).



2.7.3 Emergency stop switch/stopping a movement

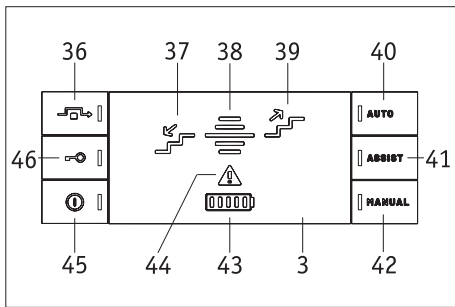
The emergency stop switch [2] is located on the left-hand side of the handlebar. If you press the emergency stop switch, the movement of the stair climber stops; all LEDs except the main switch LED and the error LED go out and a beep sounds in quick succession.

- Turn the emergency stop switch forward to the “STOP” button to stop the movement of the stair climber immediately in an emergency.
- To be able to operate the stair climber again after pressing the emergency stop switch [2]:
 - Turn the emergency stop switch [2] backwards onto the button with the “Step” icon to deactivate the emergency stop switch.
 - Press the main switch [45] to completely switch off the stair climber.
 - Press the main switch [45] again to switch on the stair climber again.



Before deactivating the emergency stop switch [2]: Ensure that the hazardous situation that led to the actuation of the emergency stop switch is over.

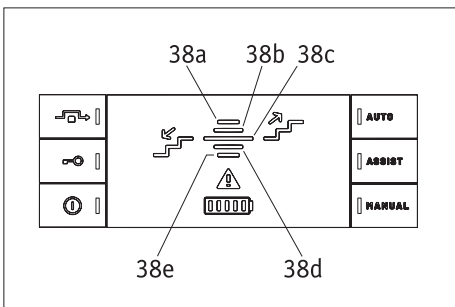
If the “auto” drive program was selected before pressing the emergency stop switch: the stair climber starts in the “assist” drive program when it is reactivated.

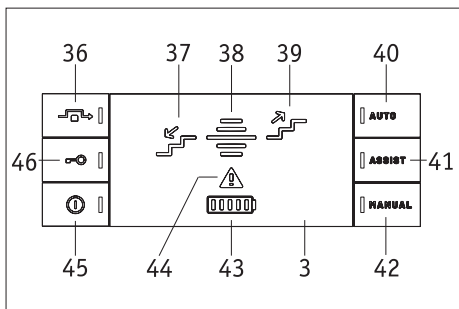


2.7.4 Indications on the display and on the switches and their meaning

The following indications mean:

- Indication “ascending” [39] or “descending” [37] lights up green:
 - the “auto” or “assist” drive program has been selected and the stair climber is at the rear or front step edge
- or:
 - the “manual” drive program has been selected and the drive switch [4] is pressed.
- Five LEDs indicate the inclination of the stair climber in relation to the ground:
 - Red LED [38a]: -10 to 15 degrees
 - Yellow LED [38b]: 15 to 21.5 degrees
 - Green LED [38c]: 21.5 to 28.5 degrees
 - Yellow LED [38d]: 28.5 to 39 degrees
 - Red LED [38e]: 39 to 90 degrees
- Three LEDs indicate the selected travel mode:
 - One green LED [40]: Drive program “auto”
 - A green LED [41]: Drive program “assist”
 - A green LED [42]: Drive program “manual”

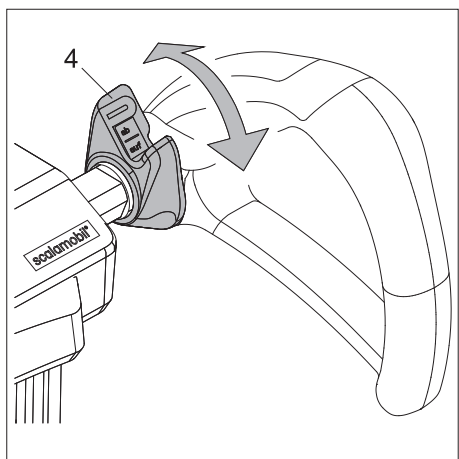




- Indication of the charge status of the battery pack [43]:

5 white lights: 81 – 100%	2 white lights: 21 – 40%
4 white lights: 61 – 80%	1 white light: 1 – 20%
3 white lights: 41 – 60%	1 red light flashes: 0%
- “Navigate obstacle” function: a flashing green LED [36] indicates that the “navigate obstacle” function (see chapter 2.6.2) has been selected and that the stair climber is moving into the “navigate obstacle” function or is moving out of the “navigate obstacle” function, i.e. that the wheels are moving. A steady green LED [36] indicates that the stair climber has reached the position of the “navigate obstacle” mode, i.e. that the wheels have moved apart so that they have four contact points.
- “Lift” climbing function: if the “lift” climbing function is activated or if it is executed, the LED for the drive program “manual” [42] goes out.
- The last LED of the battery pack [43] flashes red and the indication “descending” [37] flashes green – the battery pack is almost empty. With this battery charge state, you can only descend. Recharge the battery pack.
- The LED “immobiliser” [46] flashes yellow – the immobiliser is activated (see chapter 4).
- The LED “immobiliser” [46] does not light up – the immobiliser is deactivated (see chapter 4).
- A red LED [44] lights up or flashes if the following faults occur:
 - red LED [44] flashes, green LED drive program “manual” [42] flashes, beep sounds three times: There is a defect (e.g. failure of a sensor), the stair climber is operating in the “manual” drive program
 - red LED [44] lights up, beep sounds three times: the stair climber is defective; contact your specialist dealer or an Alber agent.
 - red LED [44] lights up, LED of the main switch [45] lights up, beep sounds in quick succession: The emergency stop switch [2] has been activated (see chapter 2.7.3).
 - Red LED [44] lights up: Battery needs to be charged.
 - red LED [44] flashes, the drive programs “auto” and “assist” no longer work, the stair climber switches to the “manual” travel mode: Clean glass sensor covers, see chapter 11.1

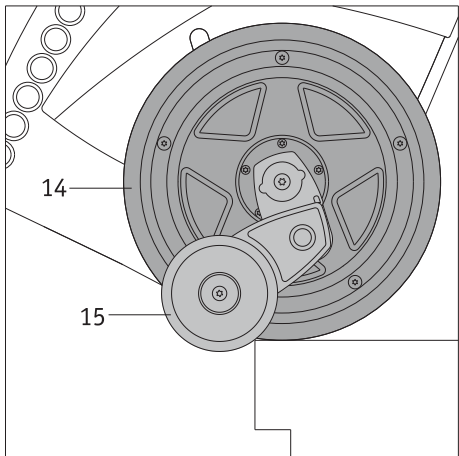
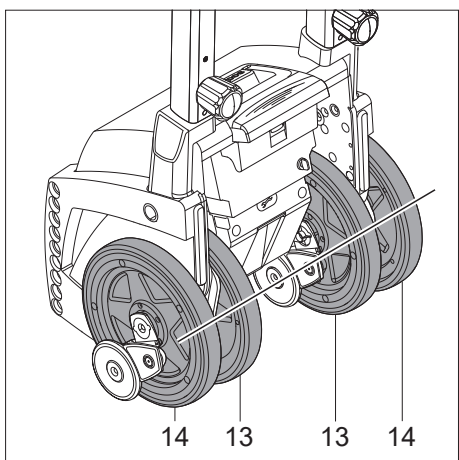
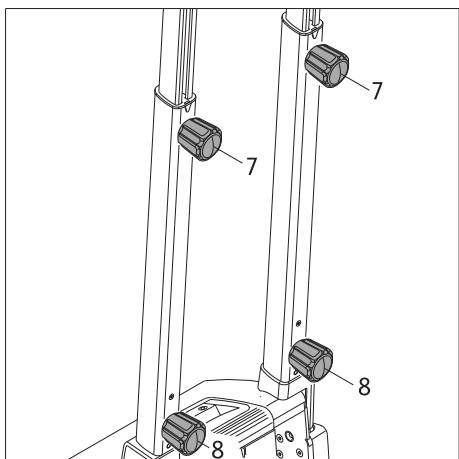
i For malfunctions of the stair climber and possible remedies, see also chapter 9.



2.7.5 Drive switch

The drive switch [4] is located on the right-hand side of the handlebar to adjust the direction of travel and to trigger the movement of the stair climber (up/down).

- In the “manual” and “assist” drive programs: turn the selector switch [4] into the “up” position to climb stairs (see chapter 3).
- In the “manual” and “assist” drive programs: turn the selector switch [4] into the “down” position to descend stairs (see chapter 3).
- In the “manual” and “assist” drive programs: release the selector switch [4] during climbing or descending to stop the movement of the stair climber (see chapter 3).
- In the “manual” drive program: turn the drive switch [4] into the “up” position to attach the scalamobil to the wheelchair or remove it from the wheelchair or to be able to remove or attach the wheels of the wheelchair (see chapter 2.9 to 2.12).



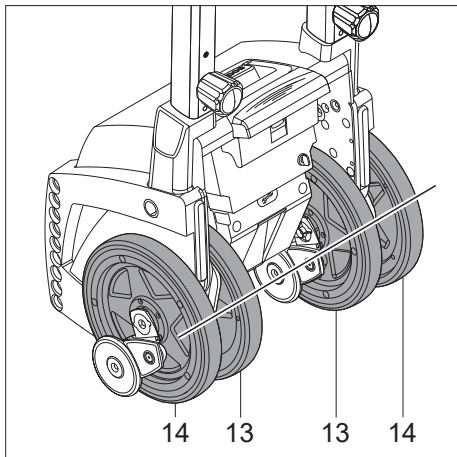
2.8 Carrying out the functional test

As a rule, you should only climb stairs when the batteries are fully charged, as you might otherwise get stuck on the stairs due to empty batteries. For safety reasons, always test the brakes before climbing stairs. This test is carried out without a wheelchair, with the stair climber switched off, and without the person to be transported.

- Check whether the knob [6] is firmly tightened and the handles are secure (see also chapter 2.2).
- Check that the knobs [7] for height adjustment are properly tightened.
- Check that the two lower knobs [9] on the drive unit are properly tightened.
- Ensure that the two inner wheels [13] and the two outer wheels [14] are aligned with each other. If the wheels are not aligned with each other, they must be brought into alignment (see chapter 2.8.1).
- If the wheels cannot be aligned with each other, further use of the stair climber is strictly prohibited.
- Switch off the stair climber again (see chapter 2.7.2).
- Carefully approach the edge of a step with the stair climber.
- Approach the first edge of the step slowly until the brakes prevent further forward movement. The brakes [15] must engage to prevent further movement of the stair climber beyond the edge.
- If the brakes [15] are working correctly, you can now put the stair climber into operation.



In the event of a malfunction of one or more brakes [15], the stair climber may no longer be put into operation. First check whether a small object (pebble, etc.) has got caught in the brake system [15] causing the malfunction (see also chapter 11.1). If this is not the case or if the malfunction persists after you have removed the object, the stair climber is defective. Please contact your specialist dealer or an agent of Alber GmbH without delay. Under no circumstances may the stair climber be operated without further inspection.



2.8.1 Aligning the wheels manually (putting them in the wheel starting position)

In several chapters of this operating manual, you are made aware of the correct alignment of the inner [13] and outer [14] drive wheels. All four wheels must be in line with each other (see diagram), i.e. in the wheel starting position. This also ensures that these four wheels are in correct contact with the ground. You can reach this important setting by doing the following:

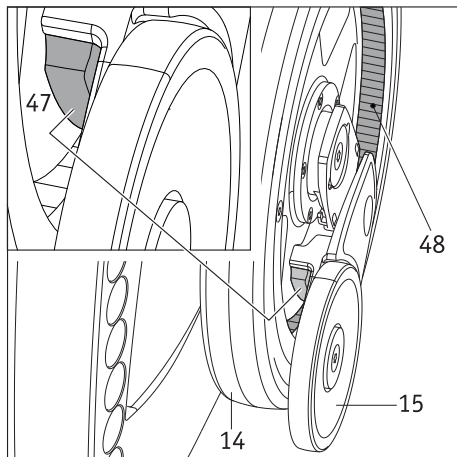
- Actuate the drive switch [4] (see chapter 2.7.5) on the handlebar until all four wheels are correctly aligned with each other. The travel direction (up/down) is thereby irrelevant.



If the wheels cannot be aligned with each other, further use of the stair climber is strictly prohibited. Minor misalignment of the wheels by a few millimetres is however acceptable and might occur for technical reasons.



Attention: When aligning the wheels, no one is permitted to sit in the wheelchair or on the scalacombi. Risk of injury!



2.8.2 Checking and cleaning the brakes

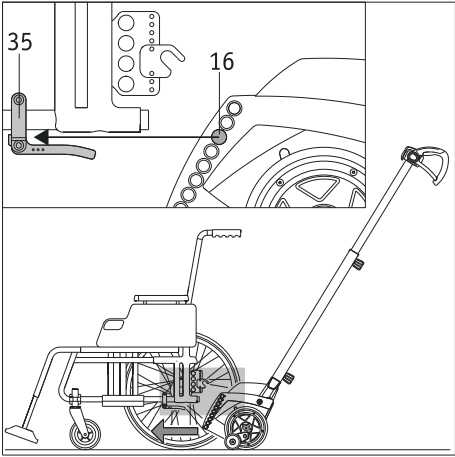
Each inside [13] and outside wheel [14] is equipped with a separate brake [15]. The brake pad [47] is located inside the brake mechanism (see diagram to the left). Regularly check the brake pads [47] and the mating surface [48] in the wheel for dirt. This surface must not be contaminated by dirt (e.g. hair, carpet fibres, etc.), oil or grease, as this could impair the braking function. Ensure that all mechanical parts of the brake [15] can be operated easily. Dirt in the brake system could cause the brake to jam.



Make sure that the stair climber is switched off and that no one has taken a seat on the scalacombi or on the wheelchair to which the scalamobil is attached.

Regularly clean the inner [13] and outer [14] wheels, the mating faces of the brake system [48] and the brake pads [47] with methylated spirit.

If the scalamobil is used on a daily basis, the parts should be cleaned once a week. If used less frequently, monthly cleaning should be sufficient.

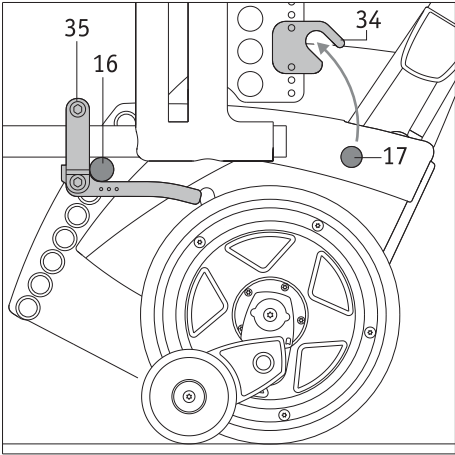


2.9 Attaching the scalamobil to the wheelchair with quickpins

During the instruction session provided by your specialist dealer or an Alber agent, you will be shown how to handle and operate the scalamobil and how to attach it to a wheelchair. The main steps for the attachment of the wheelchair are described here again in detail.

- Align the two inner [13] and the two outer [14] drive wheels of the scalamobil in a line with each other and carry out a functional test (see chapters 2.8.1 and 2.8).
- Switch off the scalamobil with the main switch [45] (see chapter 2.7.2).
- Place the wheelchair to be transported on a flat surface. The wheelchair user may remain seated in the wheelchair.
- Apply the parking brakes of the wheelchair so that it cannot roll away.
- Slide the scalamobil under the wheelchair so that it is in the centre as shown in the diagram. In doing so, insert the rods [16] of the scalamobil into the lower mounts [35] mounted on both sides of the wheelchair.

If the rods [16] are located in the two lower mounts [35] on the wheelchair, in the next step, the upper bolts [17] must be inserted into the forks [34] of the upper mounts on the wheelchair. This can be done in two ways:

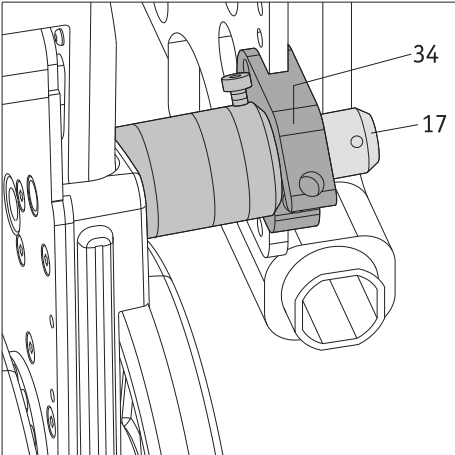


2.9.1 Manual retraction

- Swivel the scalamobil upwards. Insert the two upper bolts [17] into the forks [34] of the upper mounts on both sides of the wheelchair.
- Close the two forks [34] of the upper brackets with a quickpin [49] (see chapter 2.9.3). The two upper bolts [17] must be firmly locked in the forks [34] so that they cannot slide out of the brackets.

2.9.2 Motorised retraction

- Switch on the scalamobil using the main switch [45] (see chapter 2.7.1).
- Switch the scalamobil to the “manual” drive program (see chapter 2.5.3).
- Press the drive switch [2] (see chapter 2.7.5); the scalamobil now pivots upwards.
- As soon as the two upper bolts [17] are retracted into the two forks [34] of the upper mounts on the wheelchair, stop swivelling by releasing the drive switch [2].
- Close the two forks [34] of the upper brackets with a quickpin [49] (see chapter 2.9.3). The two upper bolts [17] must be firmly locked in the forks [34] so that they cannot slide out of the brackets.

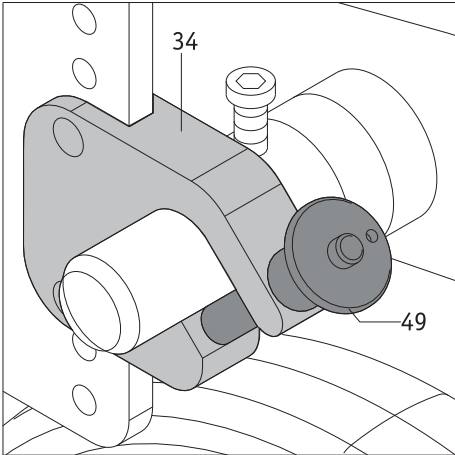


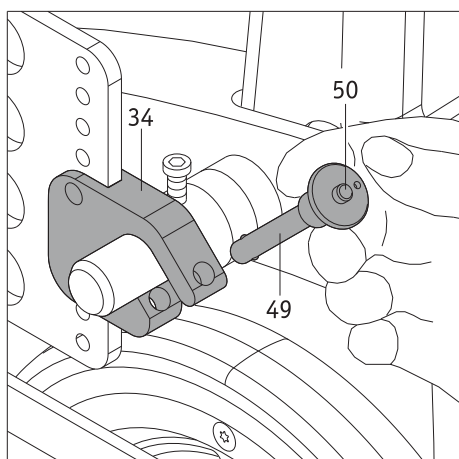
When using motorised retraction to retract the scalamobil, only swivel it upwards until the two upper bolts [17] are fully engaged in the two forks [34] of the upper mounts and can be locked in place with the quickpins [49].

Never swivel the scalamobil beyond this point while the bolts are unlocked, as otherwise the wheelchair wheels could lift off the ground and the wheelchair could start moving in an uncontrolled manner.



To attach the scalamobil to the wheelchair, you must work on level ground away from stairs.





2.9.3 Inserting quickpins

- Hold the quickpin [49] between your index and middle finger as shown in the diagram.
- Press your thumb on the release catch [50] in the centre of the quickpin and guide the quickpin as far as it will go through the fork [34] of the upper bracket.
- Release the release catch [50]. As a result, the fork is secured, and the bolt of the scalamobil can no longer slide off on its own.

2.9.4 Removing the quickpins

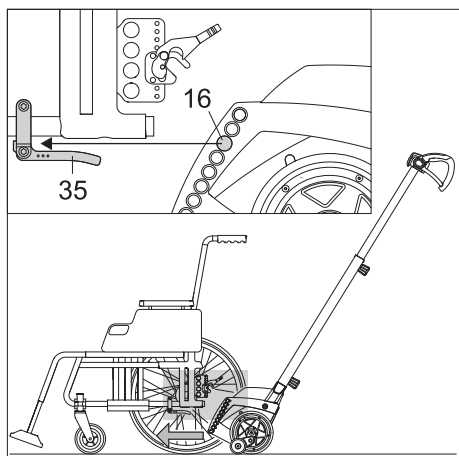
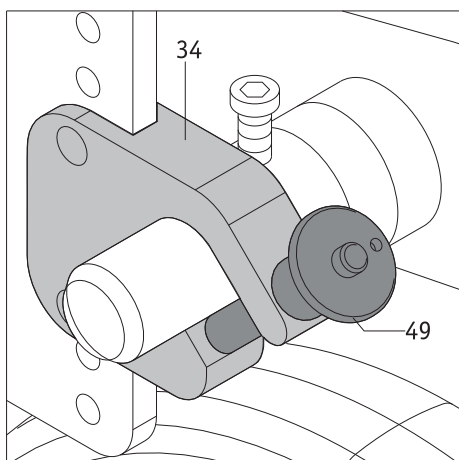
- Hold the quickpin [49] between your index and middle finger.
- Press your thumb on the release catch [50] in the centre of the quickpin and pull the quickpin completely out of the fork [34] of the upper bracket.



Ensure that the quickpin cannot be inserted into or removed from the fork without pushing in the release catch [50]. If it can be inserted or removed without pushing in the release catch, the quickpin is defective and must be replaced without delay.



If one or both quickpins are defective or not properly locked in the forks, do not attempt to climb stairs.

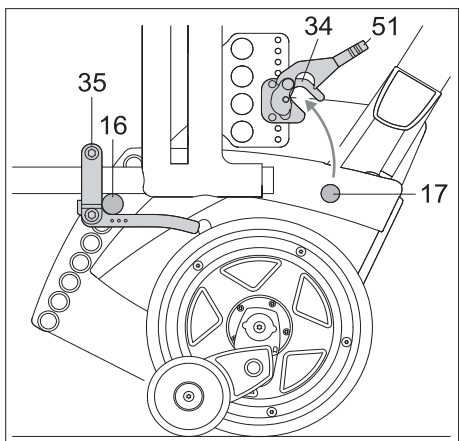


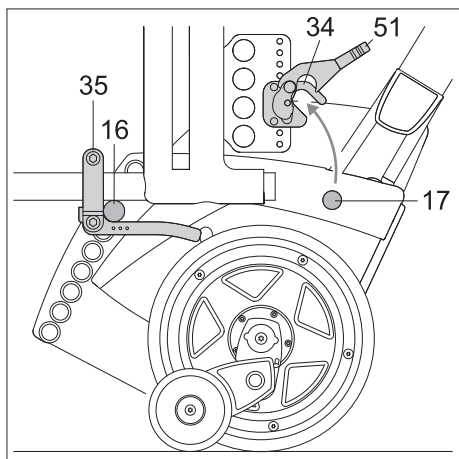
2.10 Attaching the scalamobil to the wheelchair with automatic locking

During the instruction session provided by your specialist dealer or an Alber agent, you will be shown how to handle and operate the scalamobil and how to attach it to a wheelchair. The main steps for the attachment of the wheelchair are described here again in detail.

- Align the two inner [13] and the two outer [14] drive wheels of the stair climber in a line with each other and carry out a functional test (see chapters 2.8 and 2.8.1).
- Switch off the scalamobil with the main switch [45] (see chapter 2.7.2).
- Place the wheelchair to be transported on a flat surface. The wheelchair user may remain seated in the wheelchair.
- Apply the parking brakes of the wheelchair so that it cannot roll away.
- Slide the scalamobil under the wheelchair so that it is in the centre as shown in the diagram. Insert the lower bolts [16] of the scalamobil into the lower mounts [35] on both sides of the wheelchair.

If the lower bolts [16] are located in the two lower mounts [35] on the wheelchair, in the next step, the lower bolts [17] must be inserted into the forks [34] of the upper mounts on the wheelchair. This can be done in two ways:





2.10.1 Manual retraction

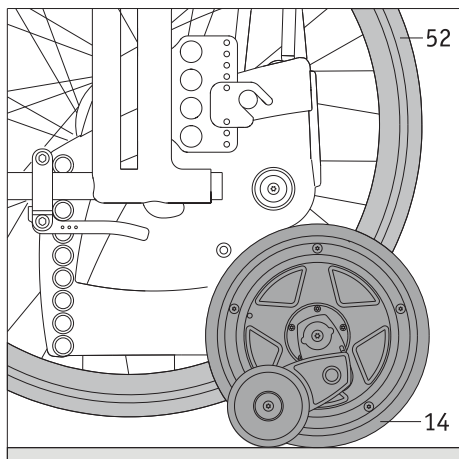
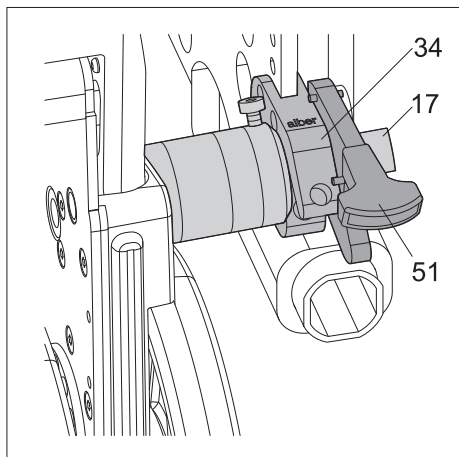
- Swivel the scalamobil upwards. Insert the two upper bolts [17] into the forks [34] of the upper mounts on both sides of the wheelchair.
- The two locks [51] on the upper brackets automatically fall downwards and thus lock the scalamobil on the upper brackets.

Check whether the locks have actually fallen down: If the locks have not dropped, a red field is visible. The two upper bolts [17] must be firmly locked in the forks [34] so that they cannot slide out of the brackets.

2.10.2 Motorised retraction

- Switch on the scalamobil using the main switch [45] (see chapter 2.7.1).
- Switch the scalamobil to the “manual” drive program (see chapter 2.5.3).
- Select the “lift” climbing function (see chapter 2.6.4): Turn the drive switch [2] to the “open” position (see chapter 2.7.5); the scalamobil now pivots upwards.
- As soon as the two upper bolts [17] are retracted into the two forks [34] of the upper mounts on the wheelchair, stop swivelling by releasing the drive switch [2].
- The two locks [51] on the upper brackets automatically fall downwards and thus lock the scalamobil on the upper brackets.

Check whether the locks have actually fallen down: If the locks have not dropped, a red field is visible. The two upper bolts [17] must be firmly locked in the forks [34] so that they cannot slide out of the brackets.



2.11 Removing the wheels from the wheelchair

With the steps described in the previous chapters, you have ensured that the scalamobil is correctly connected to the wheelchair. It is now essential to remove the two drive wheels [36] from the wheelchair:

- If you have not already done so, switch on the scalamobil using the main switch [45] (see chapter 2.7.1).
- Switch the scalamobil to the “manual” drive program.
- Turn the drive switch [4] to the “up” position to lift the scalamobil and the wheelchair attached to it. Press the drive switch [4] until the two outer drive wheels [14] of the scalamobil are on the ground and the two drive wheels of the wheelchair [52] are slightly above the ground.
- Release the parking brakes of the wheelchair.
- Remove the two drive wheels [52] of the wheelchair.
- Turn the drive switch [4] to the “down” position to lower the scalamobil and the wheelchair attached to it. Press the travel switch until the two inner [13] and outer [14] wheels of the scalamobil are on the ground and in line with each other (see also chapter 2.8.1).

After all above steps have been completed, you can now climb the stairs.



WARNING!

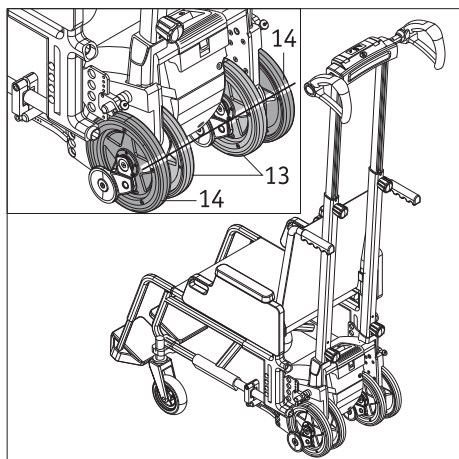
Never attempt to climb stairs while the wheels are attached to the wheelchair – an uncontrollable fall would be the immediate consequence!

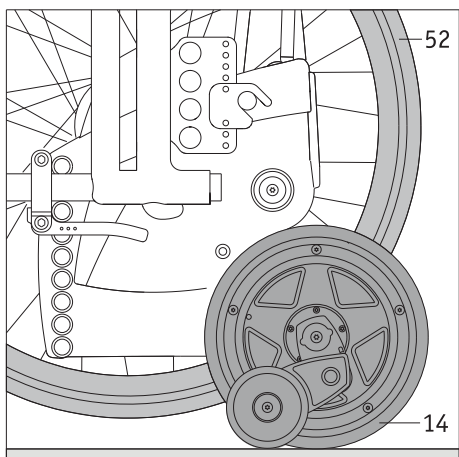


The scalamobil attached to the wheelchair may cause the centre of gravity of the wheelchair to shift, which may also alter the limits for static stability.



If there is sufficient space in the staircase, the wheelchair transport bracket, which is available as an accessory, can be used to transport the wheelchair wheels when climbing stairs. This means that the wheelchair wheels do not need to be carried separately.



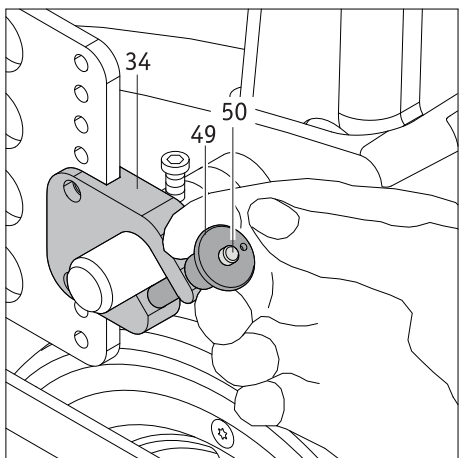


2.12 Removing the scalamobil from the wheelchair

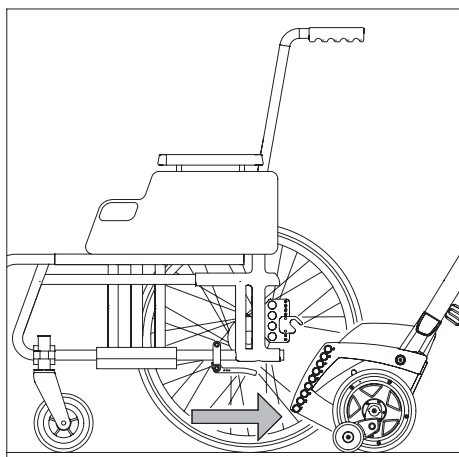
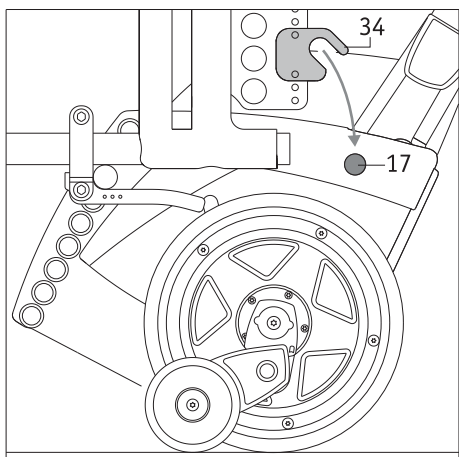
After climbing stairs, the scalamobil can remain attached to the wheelchair (please refer to our instructions in chapter 3.13) or be removed as described below.

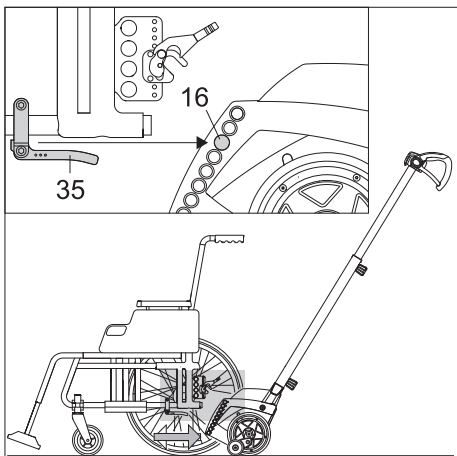
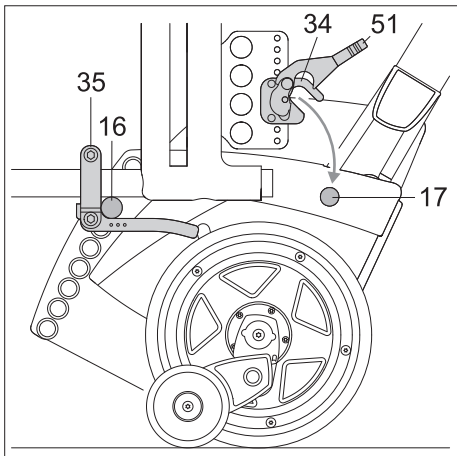
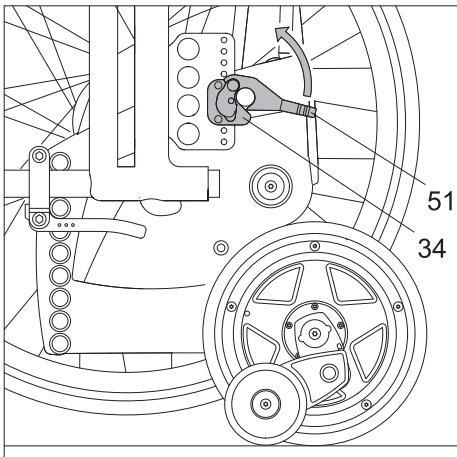
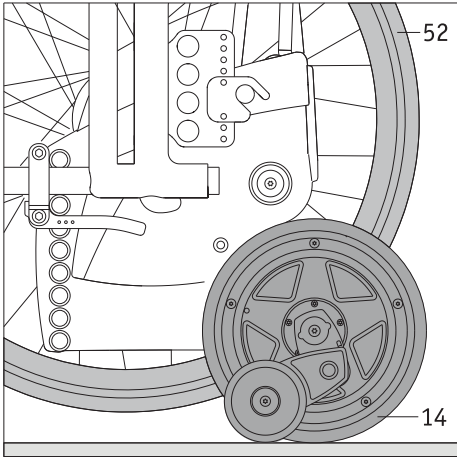
2.12.1 With quickpins

- Switch the scalamobil to the “manual” drive program (see chapter 2.5.3).
- Select the “lift” climbing function (see chapter 2.6.4): Turn the drive switch [4] into the “up” position (see chapter 2.7.5) and swivel the scalamobil upwards until it is possible to attach the drive wheels [52] to the wheelchair.
- Mount the drive wheels [52] on the wheelchair and check them to ensure proper attachment.
- Apply the parking brakes of the wheelchair so that it cannot roll away.
- Turn the drive switch [4] to the “down” position (see chapter 2.7.5) and lower the scalamobil until its two outer wheels [14] and the two wheels of the wheelchair [52] are on the ground.
- Remove the quickpins from the fork [34] of the upper bracket (see chapter 2.9.4).
- Press the drive switch [4] to swivel the upper bolts [17] of the scalamobil out of the fork [34] of the bracket.
- Press the drive switch [4] to swivel the scalamobil further down until its inner [13] and outer [14] drive wheels are in line with each other.
- Pull the scalamobil out from under the wheelchair and store it in a safe place. Pay attention to a safe storage position so that the device does not fall over and thereby injure the user or damage the device.
- Switch off the scalamobil with the main switch [45] (see chapter 2.7.2).



Only remove the scalamobil from the wheelchair when it is on level ground; never remove it when it is directly on a step.



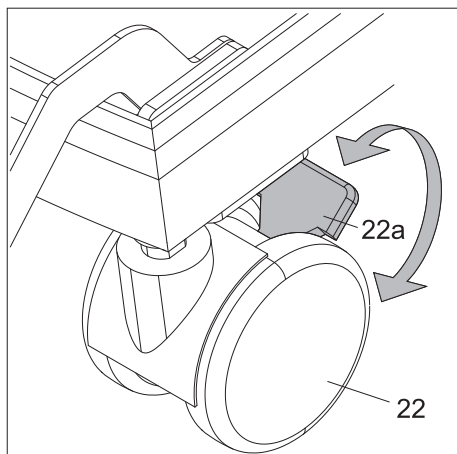


2.12.2 With automatic locking

- Switch the scalamobil to the “manual” drive program.
- Select the “lift” climbing function (see chapter 2.6.4): Turn the drive switch [2] into the “up” position (see chapter 2.7.5) and swivel the scalamobil upwards until it is possible to attach the drive wheels [52] to the wheelchair.
- Mount the drive wheels [52] on the wheelchair and check them to ensure proper attachment.
- Apply the parking brakes of the wheelchair so that it cannot roll away.
- Lift the two locks [51] on the forks [34].
- Swivel the scalamobil out of the forks [34] of the upper brackets downwards, so that the wheels of the scalamobil are on the ground.
- Pull the scalamobil out from under the wheelchair and store it in a safe place. Pay attention to a safe storage position so that the device cannot fall over and thereby be damaged or injure the user.
- Switch off the scalamobil with the main switch [45] (see chapter 2.7.2).



Only remove the scalamobil from the wheelchair when it is on level ground; never remove it when it is directly on a step.



2.13 scalacombi: Actuating the parking brakes of the castors

The scalacombi has parking brakes [22a] on the castors [22]. When the brakes are applied, the scalacombi cannot move inadvertently.

- Apply the parking brakes [22a] of the scalacombi before the person to be transported is seated on the seat or before they leave the seat.
- Release the parking brakes [22a] before moving the scalacombi.



WARNING!

Be sure to apply the parking brakes [22a] on both castors [22] of the scalacombi before the person to be transported is seated on the seat or before they leave the seat. Make sure that the parking brakes [22a] are correctly applied and cannot be released inadvertently. This prevents bodily injury and/or property damage to the scalacombi.

3. Climbing stairs

During your initial instruction session, you will have been shown how to climb stairs. You also had the opportunity to complete your first climb under the supervision of your specialist dealer or an Alber agent. Nevertheless, you should read the following instructions for climbing stairs thoroughly again and – if necessary – practice the individual steps again on stairs without the person to be transported.

The use of one or more optionally available straps may be necessary when transporting a person: a lap strap or a foot strap or a shoulder harness. It is the responsibility of the operator to check whether this equipment is necessary.

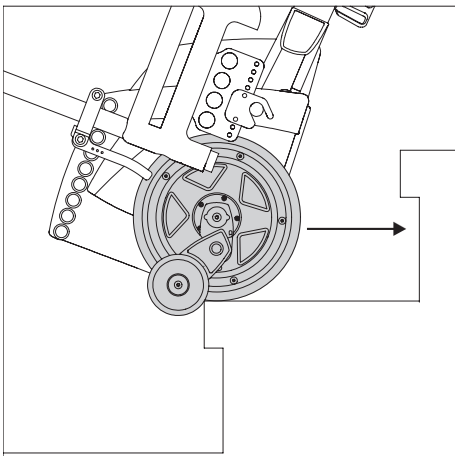
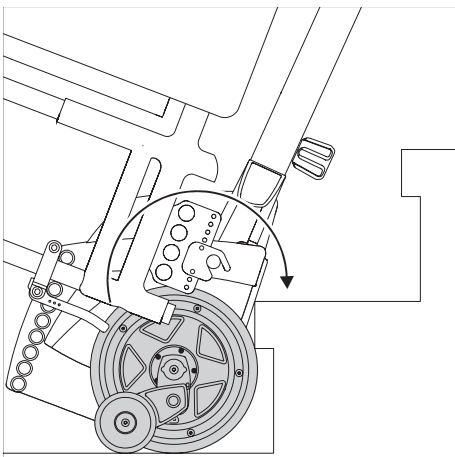
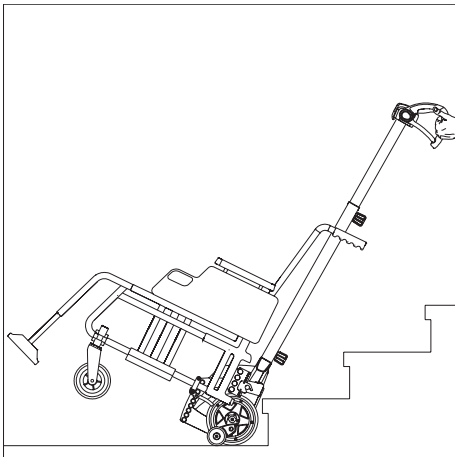
The scalamobil may only be attached or removed from the wheelchair (with a person sitting in it, if applicable) on a safe surface, but never directly when it is on the edge of the top step.



Ensure that the stair climber is switched off while the person to be transported is sitting in the wheelchair or scalacombi and while they are getting out of the wheelchair or scalacombi.

Before climbing stairs:

- Ensure that the inner [13] and outer [14] drive wheels are aligned with each other (see chapter 2.8.1).
- Make sure that the person to be transported has safely taken a seat in the wheelchair or on the seat of the scalacombi.



3.1 Ascending stairs in the "auto" drive program

- If necessary, turn the armrests [26] of the scalacombi back to the correct position, secure the armrests [26] in this position with the help of the saddle clamps [24] and check that the armrests [26] are firmly seated and correctly attached (see chapter 2, chapter 2.3 and chapter 7.4).
- If you have not already done so, switch on the stair climber with the main switch [4] (see chapter 2.7.1).
- Select the "auto" drive program (see chapter 2.5.1).
- Tilt the stair climber towards you until the optimum angle of inclination is reached. When the optimal angle of inclination is reached:
 - the device including the person to be transported is in balance.
 - the green LED for the angle of inclination [38c] lights up in the display (see chapter 2.7.4).

You must maintain this angle of inclination at all times when ascending the stairs.

- Carefully move towards the stairs in reverse, avoid jerky movements, until the wheels of the stair climber come to a stop at the rear edge of the first step.
- When the stair climber is at the rear edge of the first step and the optimal angle of inclination is reached, the upward movement starts.
- The stair climber is now located on the outer edge of the step you have successfully climbed. Carefully pull the stair climber, avoid jerky movements, to the rear edge of the next step and climb the next step.
- Repeat the above steps until you have climbed all the steps.
- Switch off the stair climber after the climbing process.
- After successfully climbing the last step: Be sure to park the stair climber on a safe surface (not directly at the edge of the step).
- If desired, you can now remove the scalamobil from the wheelchair (see chapter 2.12).



If you want to stop the stair climber while climbing a step, press the emergency stop switch [2]. In this case, the stair climber comes to an immediate stop.

How to put the stair climber back into operation after pressing the emergency stop switch [2]: see chapter 2.7.3.



Please note that the stair climber never starts in the "auto" drive program for safety reasons when it is switched on. After switching on again, the stair climber starts in the "assist" drive program if the "auto" drive program was selected before.



You can also climb the step if one of the yellow LEDs [38b, 38d] lights up. We do however recommend that you tilt the stair climber so that the green LED [38c] lights up, because the stair climber including the person to be transported is then at the optimal support angle.

If you stray from the correct position on the stairs after starting your trip (e.g. if you move the stair climber away from the edge of the step):

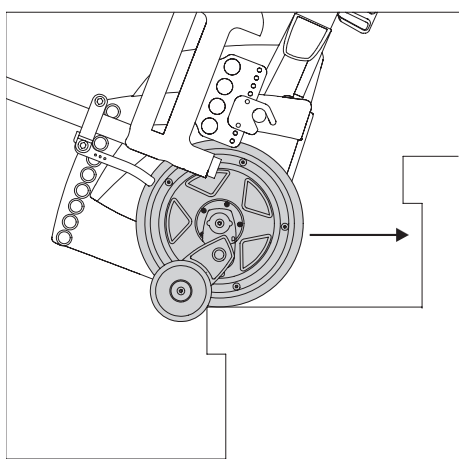
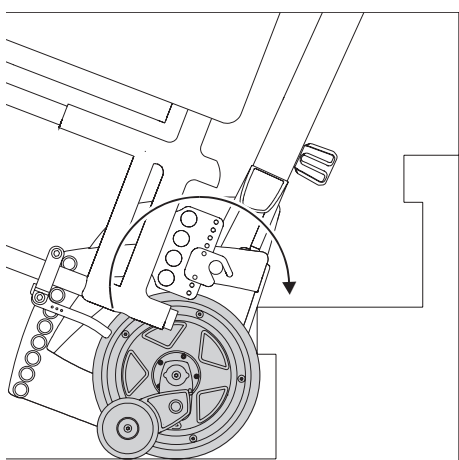
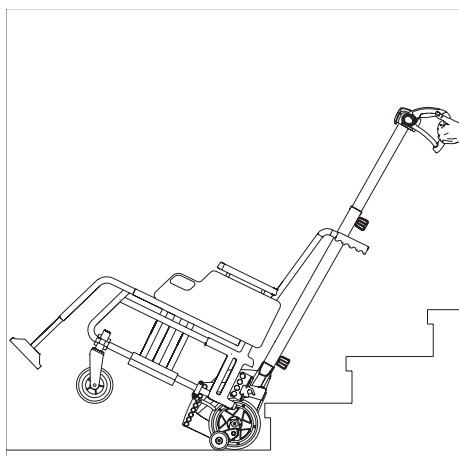
- The ascending stops.
- The green LED [40] for the "auto" drive program flashes.
- A beep sounds once.

In such cases, proceed as follows to continue the ascent in the "auto" drive program:

- Gently move the stair climber towards the rear edge of the step.
- Push the drive switch [4] into the "up" position.

Or:

- Push the button [40] for the "auto" drive program.



3.2 Ascending stairs in the “assist” drive program

- If necessary, turn the armrests [26] of the scalacombi back to the correct position, secure the armrests [26] in this position with the help of the saddle clamps [24] and check that the armrests [26] are firmly seated and correctly attached (see chapter 2, chapter 2.3 and chapter 7.4).
- If you have not already done so, switch on the stair climber with the main switch [45] (see chapter 2.7.1).
- Select the “assist” drive program (see chapter 2.5.2).
- Tilt the stair climber towards you until the optimum angle of inclination is reached. When the optimal angle of inclination is reached:
 - the device including the person to be transported is in balance.
 - the green LED for the angle of inclination [38c] lights up in the display (see chapter 2.7.4).
 You must maintain this angle of inclination at all times when ascending the stairs.
- Carefully move towards the stairs in reverse, avoid jerky movements, until the wheels of the stair climber come to a stop at the first step.
- Turn the drive switch [4] into the “up” position (see chapter 2.7.5) to move one step higher. At the same time, the stair climber must be pulled slightly towards the operator.
- Do not release the drive switch [4] while the scalamobil is climbing the step.
- The stair climber is now located on the outer edge of the step you have successfully climbed. Release the drive switch [4] and carefully pull the stair climber, avoid jerky movements, to the next step.
- Press the drive switch [4] again to climb the next step.
- Repeat the above steps until you have climbed all the steps.
- Switch off the stair climber after the climbing process.
- After successfully climbing the last step: Be sure to park the stair climber on a safe surface (not directly at the edge of the step).
- If desired, you can now remove the scalamobil from the wheelchair (see chapter 2.12).



In the “assist” and “manual” drive programs, the climbing process is automatically interrupted on each step.



If you want to stop the stair climber while climbing a step, do not continue pressing the drive switch [4]. Alternatively, while the drive switch [4] is actuated, you can press the emergency stop switch [2]. In this case, the stair climber also stops immediately. How to put the stair climber back into operation after pressing the emergency stop switch [2]: see chapter 2.7.3. Press the drive switch [4] in the correct direction.



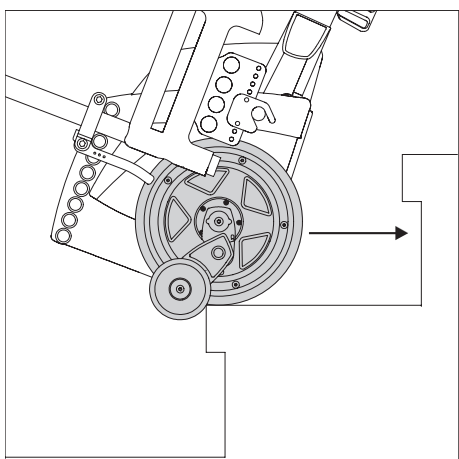
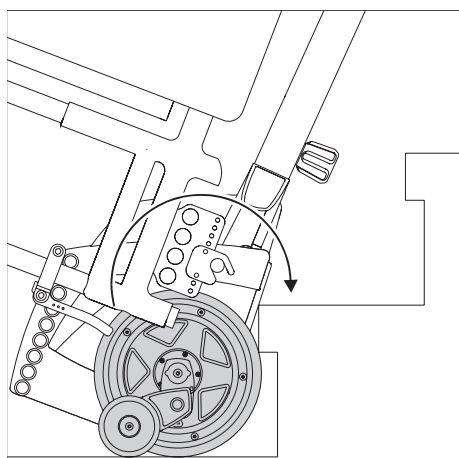
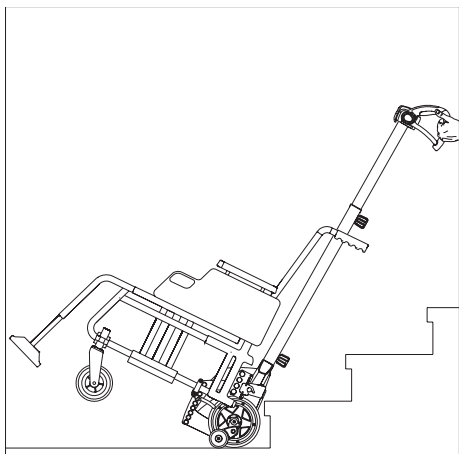
You can also climb the step if one of the yellow LEDs [38b, 38d] lights up. We do however recommend that you tilt the stair climber so that the green LED [38c] lights up, because the stair climber including the person to be transported is then at the optimal support angle.

If you stray from the correct position on the stairs after starting your trip (e.g. if you move the stair climber away from the edge of the step):

- The ascending stops.
- The green LED [40] for the “assist” drive program flashes.
- A beep sounds once.

In such cases, proceed as follows to continue the ascent in the “assist” drive program:

- Gently move the stair climber towards the rear edge of the step.
- Push the drive switch [4] into the “up” position.



3.3 Ascending stairs in the “manual” drive program

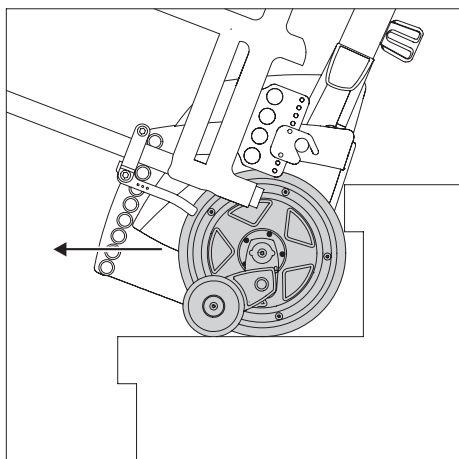
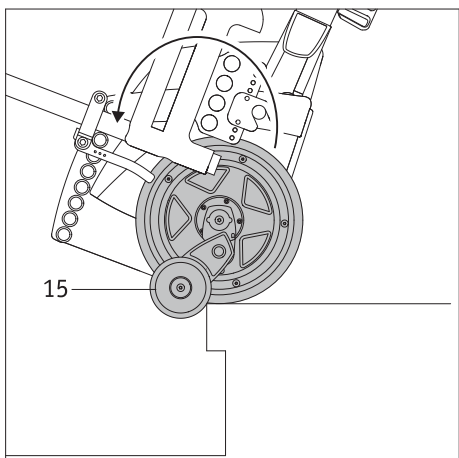
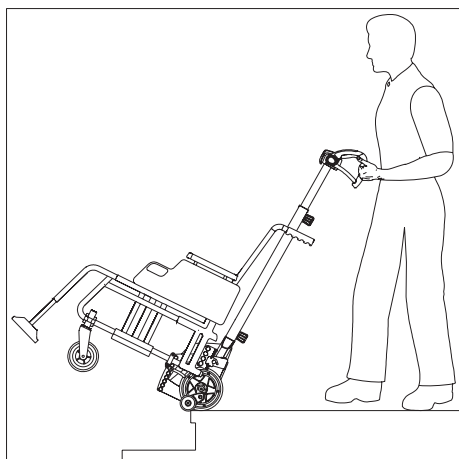
- If necessary, turn the armrests [26] of the scalacombi back to the correct position, secure the armrests [26] in this position with the help of the saddle clamps [24] and check that the armrests [26] are firmly seated and correctly attached (see chapter 2, chapter 2.3 and chapter 7.4).
- If you have not already done so, switch on the stair climber with the main switch [45] (see chapter 2.7.1).
- Select the “manual” drive program (see chapter 2.5.3).
- Tilt the stair climber towards you until the optimum angle of inclination is reached. When the optimal angle of inclination is reached, the device including the person to be transported is in balance. You must maintain this angle of inclination at all times when ascending the stairs.
- Carefully move towards the stairs in reverse, avoid jerky movements, until the wheels of the stair climber come to a stop at the first step.
- Turn the drive switch [4] into the “up” position (see chapter 2.7.5) to move one step higher. At the same time, the stair climber must be pulled slightly towards the operator.
- Do not release the drive switch [4] while the scalamobil is climbing the step.
- The stair climber is now located on the outer edge of the step you have successfully climbed. Release the drive switch [4] and carefully pull the stair climber, avoid jerky movements, to the next step.
- Press the drive switch [4] again to climb the next step.
- Repeat the above steps until you have climbed all the steps.
- Switch off the stair climber after the climbing process.
- After successfully climbing the last step: Be sure to park the stair climber on a safe surface (not directly at the edge of the step).
- If desired, you can now remove the scalamobil from the wheelchair (see chapter 2.12).



In the “assist” and “manual” drive programs, the climbing process is automatically interrupted on each step.



If you want to stop the stair climber while climbing a step, do not continue pressing the drive switch [4]. Alternatively, while the drive switch [4] is actuated, you can press the emergency stop switch [2]. In this case, the stair climber also stops immediately. How to put the stair climber back into operation after pressing the emergency stop switch [2]: see chapter 2.7.3. Press the drive switch [4] in the correct direction.



3.4 Descending stairs in the “auto” drive program

- If necessary, turn the armrests [26] of the scalacombi back to the correct position, secure the armrests [26] in this position with the help of the saddle clamps [24] and check that the armrests [26] are firmly seated and correctly attached (see chapter 2, chapter 2.3 and chapter 7.4).
- If you have not already done so, switch on the stair climber with the main switch [45] (see chapter 2.7.1).
- Select the “auto” drive program (see chapter 2.5.1).
- Tilt the stair climber towards you until the optimum angle of inclination is reached. When the optimal angle of inclination is reached:
 - the device including the person to be transported is in balance.
 - the green LED for the angle of inclination [38c] lights up in the display (see chapter 2.7.4).
 You must maintain this angle of inclination at all times when ascending the stairs.
- Approach the first edge of the step slowly until the brakes [15] prevent further forward movement (see diagram).
- When the stair climber is at the front edge of the first step and the optimal angle of inclination is reached, the downward movement starts.
- Ideally, you should place the support pad [5] on your thigh. This conserves energy.
- Carefully push the stair climber back to the edge of the step, avoid jerky movements, until the brakes [15] prevent further movement.
- When the stair climber is at the front edge of the first step and the optimal angle of inclination is reached, the downward movement starts.
- Repeat the above steps until you have climbed all the steps.
- Switch off the stair climber after the climbing process.
- After successfully climbing the last step: Be sure to park the stair climber on a safe surface (not directly at the edge of the step).
- If desired, you can now remove the scalamobil from the wheelchair (see chapter 2.12).

i If you want to stop the stair climber while climbing a step, press the emergency stop switch [2]. In this case, the stair climber stops immediately.
 How to put the stair climber back into operation after pressing the emergency stop switch [2]: see chapter 2.7.3.

i Please note that the stair climber never starts in the “auto” drive program for safety reasons when it is switched on. After switching on again, the stair climber starts in the “assist” drive program if the “auto” drive program was selected before.

i You can also climb the step if one of the yellow LEDs [38b, 38d] lights up. We do however recommend that you tilt the stair climber so that the green LED [38c] lights up, because the stair climber including the person to be transported is then at the optimal support angle.

If you stray from the correct position on the stairs after starting your trip (e.g. if you move the stair climber away from the edge of the step):

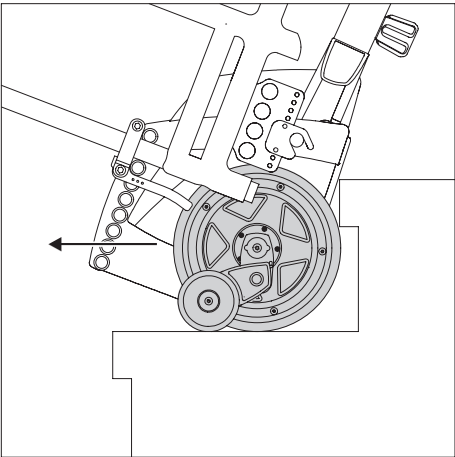
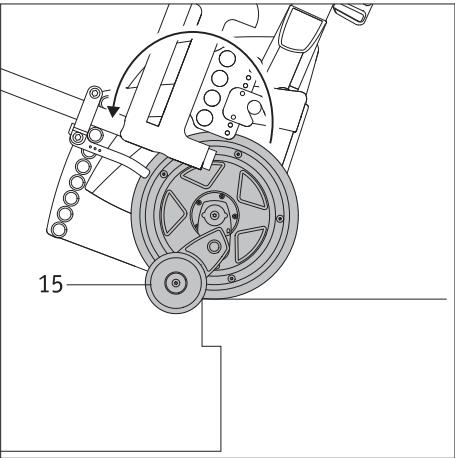
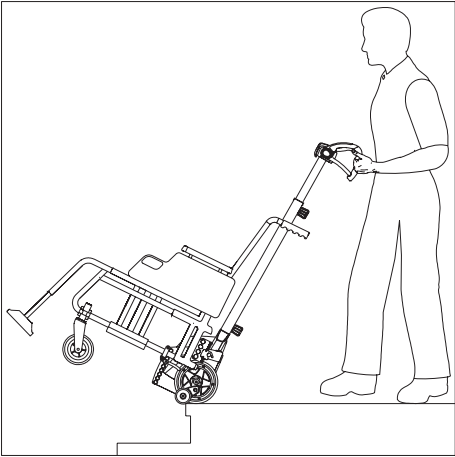
- The descending stops.
- The green LED [40] for the “auto” drive program flashes.
- A beep sounds once.

In such cases, proceed as follows to continue the descent in the “auto” drive program:

- Gently move the stair climber towards the forward edge of the step.
- Push the drive switch [4] into the “down” position.

Or:

- Push the button [40] for the “auto” drive program.



3.5 Descending stairs in the “assist” drive program

- If necessary, turn the armrests [26] of the scalacombi back to the correct position, secure the armrests [26] in this position with the help of the saddle clamps [24] and check that the armrests [26] are firmly seated and correctly attached (see chapter 2, chapter 2.3 and chapter 7.4).
- If you have not already done so, switch on the stair climber with the main switch [45] (see chapter 2.7.1).
- Select the “assist” drive program (see chapter 2.5.2).
- Tilt the stair climber towards you until the optimum angle of inclination is reached. When the optimal angle of inclination is reached:
 - the device including the person to be transported is in balance.
 - the green LED for the angle of inclination [38c] lights up in the display (see chapter 2.7.4).

You must maintain this angle of inclination at all times when ascending the stairs.

- Approach the first edge of the step slowly until the brakes [15] prevent further forward movement (see diagram).
- To move down one step, push down the drive switch [4] (see chapter 2.7.5) and hold it there until the stair climber has been lowered to the next step. At the same time, the operator must push the stair climber forwards slightly.
- Release the drive switch [4] as soon as the stair climber with the inner [13] and outer [14] drive wheels is on the next step.
- Ideally, you should place the support pad [5] on your thigh. This conserves energy.
- Carefully push the stair climber back to the edge of the step, avoid jerky movements, until the brakes [15] prevent further movement.
- Press the drive switch [4] (see chapter 2.7.5) again to descend to the next step.
- Repeat the above steps until you have climbed all the steps.
- Switch off the stair climber after the climbing process.
- After successfully climbing the last step: Be sure to park the stair climber on a safe surface (not directly at the edge of the step).
- If desired, you can now remove the scalamobil from the wheelchair (see chapter 2.12).



If you want to stop the stair climber while climbing a step, do not continue pressing the drive switch [4]. Alternatively, while the drive switch [4] is actuated, you can press the emergency stop switch [2]. The stair climber will also come to an immediate stop. For details of how to put the stair climber back into operation after pressing the emergency stop switch [2]: see chapter 2.7.3. Press the drive switch [4] in the correct direction.



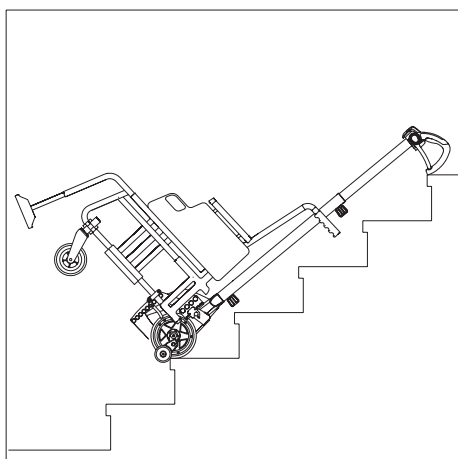
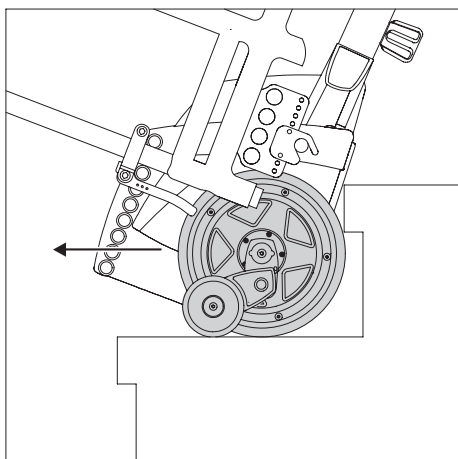
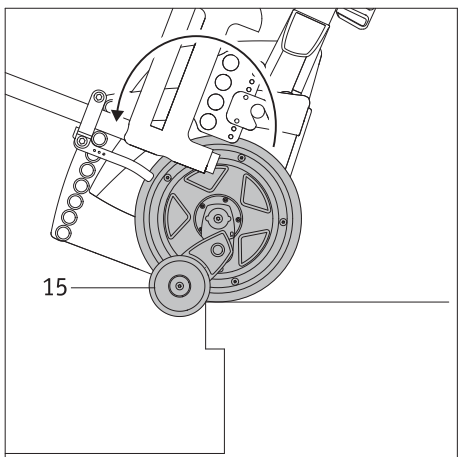
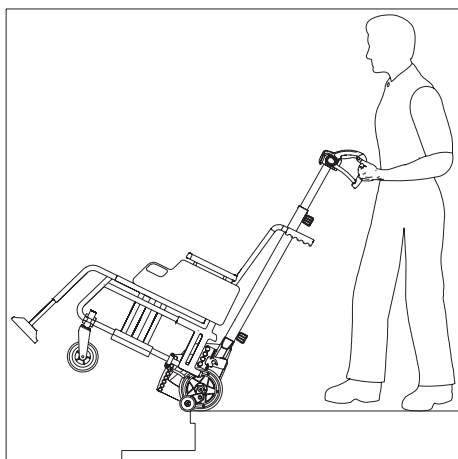
You can also climb the step if one of the yellow LEDs [38b, 38d] lights up. We do however recommend that you tilt the stair climber so that the green LED [38c] lights up, because the stair climber including the person to be transported is then at the optimal support angle.

If you stray from the correct position on the stairs after starting your trip (e.g. if you move the stair climber away from the edge of the step):

- The descending stops.
- The green LED [40] for the “assist” drive program flashes.
- A beep sounds once.

In such cases, proceed as follows to continue the descent in the “assist” drive program:

- Gently move the stair climber towards the forward edge of the step.
- Push the drive switch [4] into the “down” position.



3.6 Descending stairs in the “manual” drive program

- If necessary, turn the armrests [26] of the scalacombi back to the correct position, secure the armrests [26] in this position with the help of the saddle clamps [24] and check that the armrests [26] are firmly seated and correctly attached (see chapter 2, chapter 2.3 and chapter 7.4).
- If you have not already done so, switch on the stair climber with the main switch [45] (see chapter 2.7.1).
- Select the “manual” drive program (see chapter 2.5.3).
- Tilt the stair climber towards you until the optimum angle of inclination is reached. When the optimal angle of inclination is reached, the device including the person to be transported is in balance. You must maintain this angle of inclination at all times when ascending the stairs.
- Approach the first edge of the step slowly until the brakes [15] prevent further forward movement (see diagram).
- Turn the drive switch [4] into the “down” position (see chapter 2.7.5) to move one step lower. At the same time, the operator must push the stair climber forwards slightly.
- Release the drive switch [2] as soon as the stair climber with the inner [15] and outer [16] drive wheels is on the next step.
- Ideally, you should place the support pad [5] on your thigh. This conserves energy.
- Carefully push the stair climber back to the edge of the step, avoid jerky movements, until the brakes [15] prevent further movement.
- Press the drive switch [4] (see chapter 2.7.5) again to descend to the next step.
- Repeat the above steps until you have climbed all the steps.
- Switch off the stair climber after the climbing process.
- After successfully climbing the last step: Be sure to park the stair climber on a safe surface (not directly at the edge of the step).
- If desired, you can now remove the scalamobil from the wheelchair (see chapter 2.12).

i If you want to stop the stair climber while climbing a step, do not continue pressing the drive switch [4]. Alternatively, while the drive switch [4] is actuated, you can press the emergency stop switch [2]. The stair climber will also come to an immediate stop. For details of how to put the stair climber back into operation after pressing the emergency stop switch [2]: see chapter 2.7.3. Press the drive switch [4] in the correct direction.

3.7 Halting the scalamobil while climbing stairs

Stairs must always be climbed without any interruption or intermediate stops. In general, stopping on stairs is only permitted in emergencies, for example if the person to be transported requires medical attention.

If it becomes necessary to notify third parties, the stair climber can be parked at the back of the step as shown in the diagram. Please ensure that you do not leave the person to be transported unattended. This means that you remain visible and are thus always within reach.

The person sitting in the wheelchair must remain calm during the interruption, i.e. they must not start to make violent movements due to feelings of anxiety.

If no headrests are attached to the stair climber, we strongly recommend that the head of the person to be transported be positioned in a suitable and physically comfortable position. If necessary, use items of clothing as an underlay.

Please note that the stair climber will be switched off automatically if it is not used for more than 15 minutes.

3.8 Changing the direction of travel in the "auto" drive program

In principle, you should always climb stairs in one direction without changing the direction of travel. If you want to change the direction of travel in a particular case, please proceed as follows:

If you ascended first:

- Stay with the stair climber at the front edge of the step and move the drive switch [4] into the "down" position for three seconds (see chapter 2.7.5) until you hear a beep.

If you descended first:

- Stay with the stair climber at the rear of the step and turn the drive switch [4] into the "up" position for three seconds (see chapter 2.7.5) until you hear a beep.



The "auto" travel mode is only partially suitable for steps with a depth of 11 cm. The direction of travel cannot be changed in the "auto" travel mode at a step depth of 11 cm.

Or:

- Position the stair climber vertically so that the red LED [38a] lights up.
- Tilt the stair climber again so that the optimal angle of inclination is reached – the LED [38c] lights up.



Due to the vertical positioning and tilting of the stair climber, the stair climber remains in the "auto" travel mode.

3.9 Changing the direction of travel in the "assist" drive program

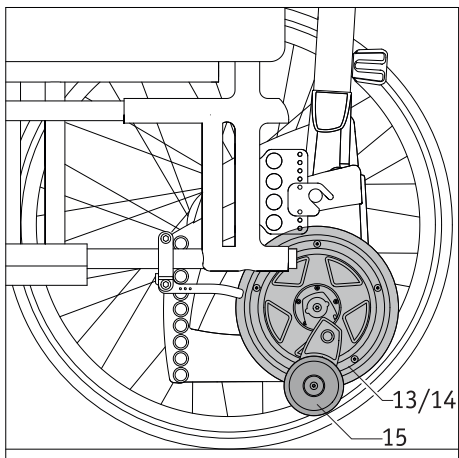
In principle, you should always climb stairs in one direction without changing the direction of travel. If you want to change the direction of travel in a particular case, proceed as follows:

If you ascended first:

- Push the stair climber to the front edge of the step.
- Turn the drive switch [4] into the "down" position (see chapter 2.7.5). The stair climber descends.

If you descended first:

- Push the stair climber to the rear edge of the step.
- Turn the drive switch [4] into the "up" position (see chapter 2.7.5). The stair climber ascends.



3.10 Using the wheelchair with scalamobil attached

If required, your scalamobil can remain attached to the wheelchair while moving on level ground. To do this, it is necessary to align the inner [13] and outer [14] wheels with each other (see chapter 2.8.1) so that they do not touch the ground.

Please note that the brake [15] protrudes somewhat from the bottom of the stair climber and might collide with minor obstacles (e.g. kerb stones). Such collisions could damage the brake [15].



Before using the scalamobil to climb stairs, you must remove the drive wheels from the wheelchair. Never attempt to climb stairs while the wheels are attached to the wheelchair – an uncontrollable fall would be the immediate consequence!

3.11 Important note about stopping after climbing stairs

In functional terms, the brakes of the scalamobil are intended solely for stair climbing. Due to the nature of the system, these brakes do not therefore have a function when on level ground, inclines or slopes. In this respect, a wheelchair with scalamobil attached and wheelchair wheels that have been removed must never be left unattended.

If no further stairs are to be climbed and the scalamobil remains attached to the wheelchair, the wheels that were removed from the wheelchair must be reattached to the wheelchair. This allows the parking brakes of the wheelchair to be applied to prevent the wheelchair with the scalamobil from rolling away. However, it is imperative that the wheelchair wheels be removed again before any further stairs are climbed. If the wheelchair wheels are not reattached, the system must be secured against rolling away unintentionally by other means.

If you have finished climbing stairs, the parking brakes [22a] on the castors [22] of the scalacombi must be applied to stop the scalacombi rolling away. The scalacombi is used to transport a person up stairs. It should not be used as a seat for a prolonged period of time before or after climbing stairs. The scalacombi is not designed for long-term use as a seat.

3.12 Special warnings for climbing stairs



If necessary, an optionally available foot strap can be used to secure the legs, as well as an optionally available lap strap to secure the person to be transported.



Make sure that the legs of the person to be transported are on the footrests of the wheelchair during transport.



The scalamobil may only be switched off on level ground and only in extreme emergencies may it be switched off when ascending or descending stairs. For details, see chapter 3.5.



Only use stairs that are not wet, slippery or waxed. Rugs must be secured to prevent them sliding. The step height must not exceed 20 cm. The minimum step depth should not be less than 11 cm.



While climbing stairs with the scalamobil, always hold the device with both hands and do not release the handlebar.



The scalamobil may only be attached or removed from the wheelchair (with a person sitting in it, if applicable) on a safe surface, but never directly when it is on the edge of the top step.



When using the stair climber on outdoor stairs, ensure that such stairs are not covered in wet leaves or pieces of paper, as they make the steps slippery. Never use the stair climber on stairs that are obviously slippery.



Never use the scalamobil to climb wet stairs or stairs covered in ice.



While climbing stairs, do not reach into the inner [13] or outer [14] wheels of the scalamobil and prevent the person to be transported from reaching into the wheels.



Do not apply hand cream or other such product before ascending or descending stairs. Your hands must be free of grease to prevent you accidentally losing your grip on the handles.



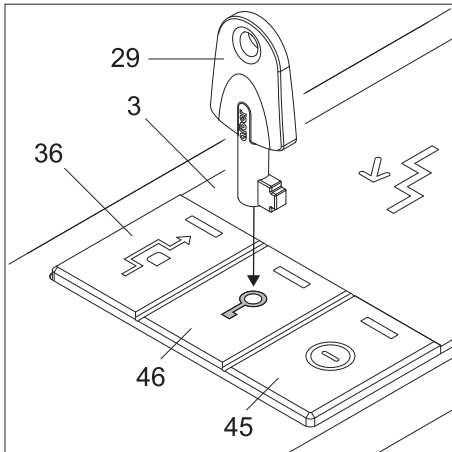
Do not wear gloves when ascending and descending the stairs as they might get caught on the control elements, especially the drive switch.



While ascending and descending stairs, the wheelchair user must not hold on to the banister or railing.

! Before ascending or descending stairs: Make sure that you have selected the desired travel mode (see chapter 2.5).

! Before ascending or descending stairs: Make sure that the tilt angle indicator [27c] lights up green, i.e. to indicate that the stair climber including the person to be transported is in balance (see chapter 2.7.4 or chapter 3.1 to 3.3).



4. Immobiliser

The immobiliser can be activated to secure the stair climber against unauthorised use. To do so, use the supplied key [29].

4.1 Activating the immobiliser

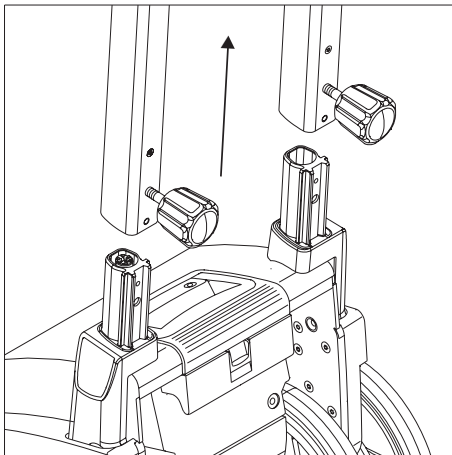
- Switch on the stair climber (see chapter 2.7.1).
- Place the key [29] on the area of the immobiliser [46] marked with the key symbol. The LED indicator flashes briefly. The stair climber then switches off automatically.

If the stair climber is now switched on, the LED display of the immobiliser [46] flashes once in yellow. The stair climbing function is disabled, and the wheels are blocked.

4.2 Deactivating the immobiliser

- Switch on the stair climber (see chapter 2.7.1).
- Place the key [29] on the area of the immobiliser [46] marked with the key symbol.
- The LED indicator is switched off and the immobiliser is deactivated. The indicator of the currently selected direction of travel [37] or [39] is lit.

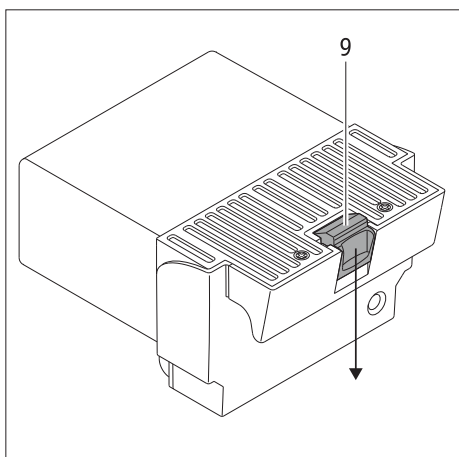
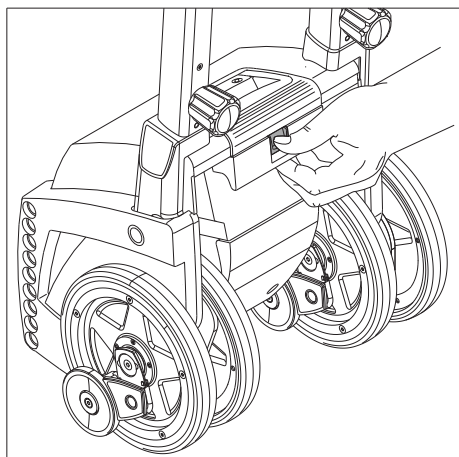
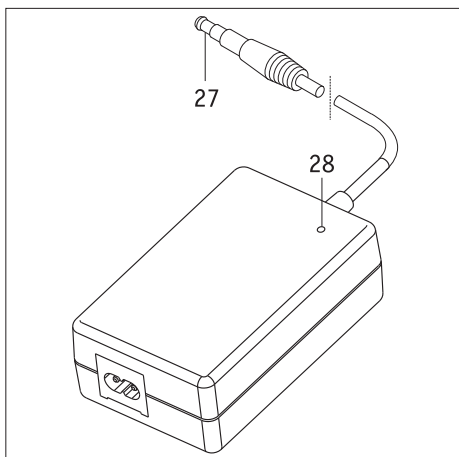
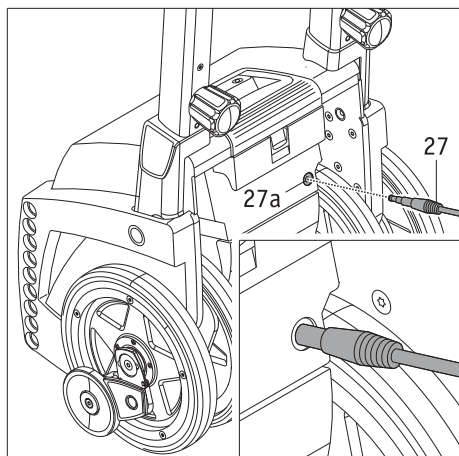
! The immobiliser can only be activated or deactivated if the stair climber has been switched on beforehand.



5. Automatic shutdown

Automatic self-shutdown occurs if no function has been activated on the stair climber within 15 minutes. The device is automatically shut down to save energy. If the stair climber is switched on and you remove the handle from the drive unit, it switches off automatically immediately.

In both cases, the inner [13] and outer [14] drive wheels remain in the position in which they were upon automatic shutdown. To this extent, the next time the stair climber is switched on, the wheels must be returned to the correct starting position (parallel position of all four wheels to each other) if necessary (see chapter 2.8.1).



6. Batteries

6.1 Charging the battery pack

Your stair climber is equipped with a set of powerful batteries that allow you to ascend or descend up to 200 steps (with a weight of 75 kg). However, after each use of the stair climber, the battery pack should be recharged to prevent unwanted stopping on stairs due to empty batteries. The battery pack can be removed for charging. However, it is not essential that you do this.

- Switch off the stair climber (see chapter 2.7.2).
- Remove the cover from the charger socket [27a].
- First insert the charging plug [27] into the charger socket [10] of the battery pack.
- Then connect the mains plug of the battery charger to a mains socket.

Note: Depending on the country you are in, the mains plug must be connected to the respective mains supply using a suitable adapter.

- The charging process now takes place; the LED indicator of the charger [28] indicates the respective charge status of the batteries.
- Further information about the charger and the charging process can be found in the operating manual enclosed with the charger.
- Once the charging process has concluded, first disconnect the mains plug of the charger (or its adapter) from the mains socket, then disconnect the charging plug [27] from the charger socket.

The stair climber cannot be switched on during charging. Switching on is only possible after the charging plug [27] has been disconnected.



Always ensure that the batteries are recharged after each use of the stair climber. When the batteries are fully recharged, the charger automatically switches to charge conservation mode. Please also observe the instructions in the operating manual enclosed with the charger.

To save energy, do not leave the charger connected to the mains for more than 24 hours.

Always check the charge status of the batteries before each use. The batteries must be fully charged.

6.2 Removing the battery pack

As a rule, the battery pack integrated into the housing of the stair climber does not have to be removed. However, for transport or for longer storage, the battery pack should be stored separately from the drive (see also chapter 7.7.1)

- Push the locking mechanism [9] of the battery pack down.
- Pull the battery pack [11] out of the housing of the scalamobil.

If the battery pack is pushed back into the housing of the stair climber, the locking mechanism automatically engages.



The battery pack can also be charged if it has been removed from the housing of the stair climber.

6.3 Information about the batteries used / handling batteries correctly

The batteries for your stair climber are maintenance-free and rechargeable. Their service life depends heavily on the number of charging/discharging cycles and whether deep discharges are avoided. The electronics installed in the stair climber permanently monitor the charge status and prevent deep discharges.

- Prevent the batteries from becoming completely discharged. For this reason, recharge the batteries of the scalamobil after each partial discharge, i.e. after every use.
- If the batteries are stored (without being charged) for a prolonged period of time, they will lose some of their capacity. After a few charging/discharging cycles, the batteries will however regain their full capacity.
- The full capacity of new batteries is only reached after about 3 to 4 charging and discharging cycles.
- In the event of contact between electrolyte fluid and eyes or skin, immediately rinse the affected area with clean water and consult a doctor.
- Do not expose the batteries to naked flames or incinerate them. This could cause the batteries to explode.
- Do not short-circuit the batteries. Short circuits result in extremely high currents, which can cause damage to the batteries and/or the stair climber.
- When the batteries have reached the end of their service life, return them to Alber or your specialist Alber dealer for proper disposal.
- We recommend that you only use the batteries offered by Alber if you need to replace them. The stair climber is designed in such a way that it performs best when used together with Alber batteries.
- Remove the battery from the stair climber if the battery has a fault and is to be transported to the service department.



The batteries of your stair climber can be charged/discharged in any position. As regards their safety, they are classified in the same group as dry cell batteries and approved for transport by air by DOT (United States Department of Transportation) and IATA (International Air Transport Association).

7. Transport and storage



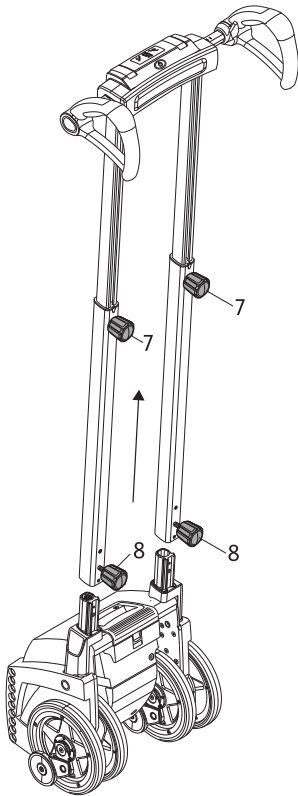
The two knobs [7] cannot and do not need to be completely unscrewed from the tubes. To adjust the handlebar height, it is sufficient to loosen it slightly.



If the tubes of the height adjustment mechanism have been pushed in, the handlebar needs to be adjusted to the operator again (see chapter 2.1).



Do not place the removed handlebar upright, as it could fall over. If it falls over, the handlebar could get damaged and/or injure you. Put the handlebar in a horizontal position for this reason.



7.1 scalamobil: disassembly into individual components

For transport purposes, your scalamobil can be disassembled into individual components without the need for tools.

- Remove the battery pack [11] from the housing (see chapter 6.2).
- Loosen the two lower knobs [8].
- Remove the handlebar from the drive unit.
- Fold up the carry handle [19] to transport the drive unit.

In confined spaces, the handlebar can still be pushed together:

- Loosen the two height adjustment knobs [7].
- Push the height adjustment tubes together.

7.2 scalamobil: putting individual components together

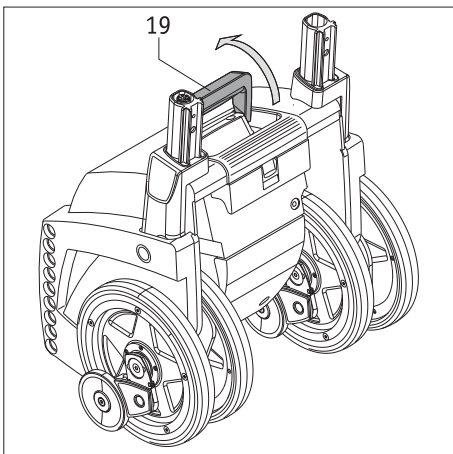
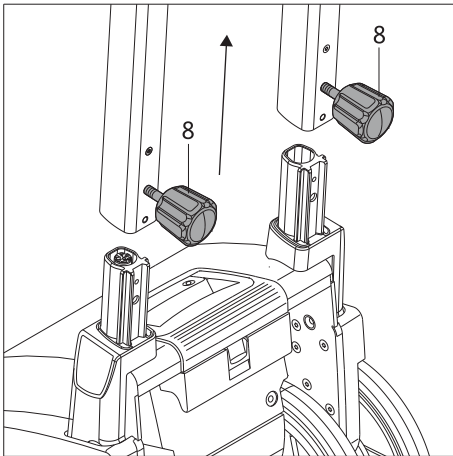
To reassemble the scalamobil after transport, please proceed as follows:

- Fold the carry handle [19] into the housing.
- Push the height adjustment tubes into the mounts on the scalamobil.
- Tighten the two lower knobs [8] again.

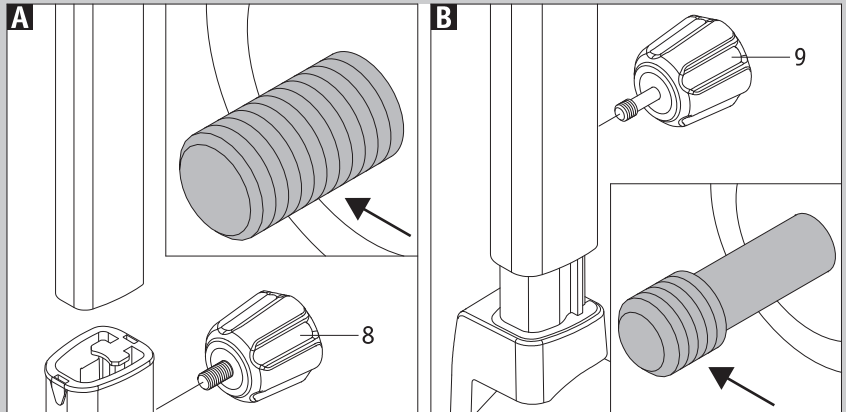


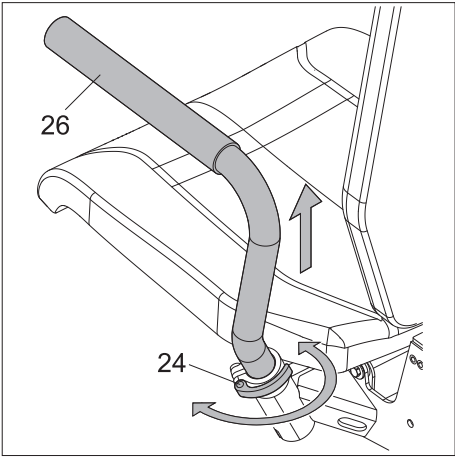
Attention: Do not turn the knobs excessively!

- Check that the height adjustment tubes are firmly attached to the scalamobil. It must not be possible to remove the tubes.
- Insert the battery pack [11] into the housing (see chapter 6.2).



If the knobs for height adjustment [7] and the lower knobs [8] have been completely removed from the handlebar, they must not be interchanged when they are screwed back into the handlebar. The knobs for height adjustment [7] have a long thread (diagram A); the lower knobs [8] have a short thread (diagram B).

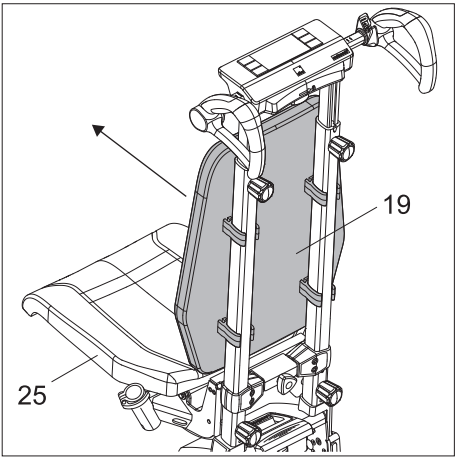




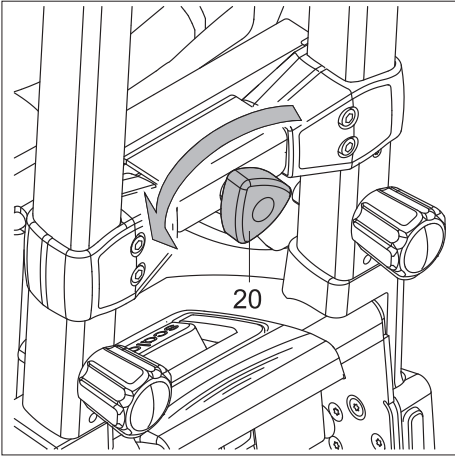
7.3 scalacombi: disassembly into individual components

For transport purposes or for storage, your scalacombi can be disassembled or combined into several components without the use of tools.

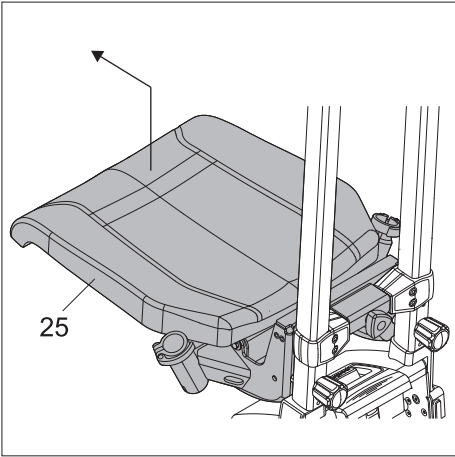
- Remove the battery pack [11] from the housing (see chapter 6.2).
- Loosen the clamps [24].
- Pull the armrests [26] up and out of their brackets.
- Tighten the clamps [24] again.



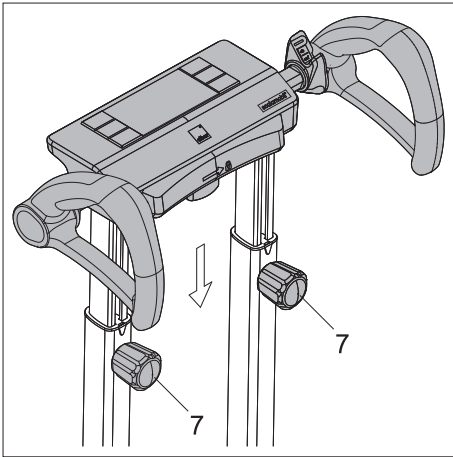
- Pull the backrest [19] with both hands in the direction of the seat [25] until the backrest [19] detaches from the height adjustment tubes.



- Loosen the seat knob [20] on the lower cross strut of the handlebar.

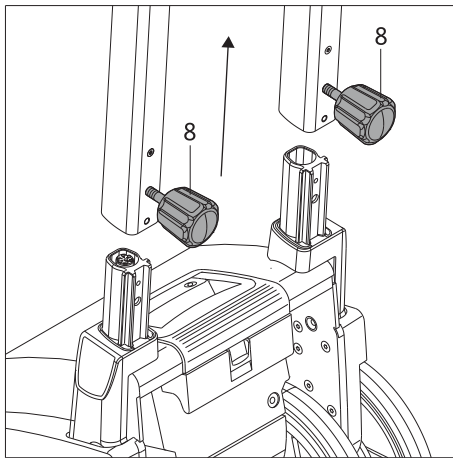


- Lift up the seat unit with the seat surface [25] by approx. 2 cm.
- Pull the seat unit with the seat surface [25] forwards away from the drive unit.

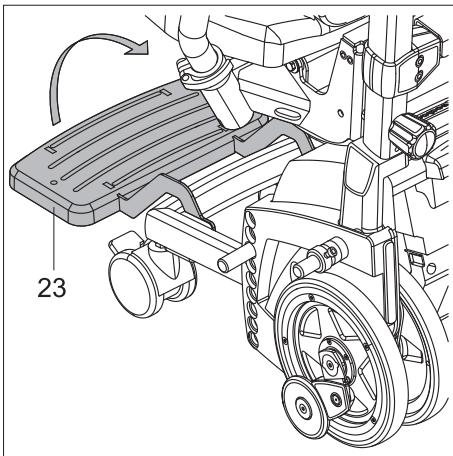


In confined spaces, the handlebar can be pushed together.

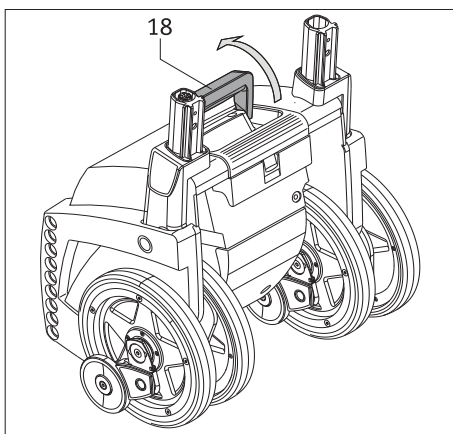
- Loosen the two height adjustment knobs [7].
- Push the height adjustment tubes together.
- Tighten the two height adjustment knobs [7] again.



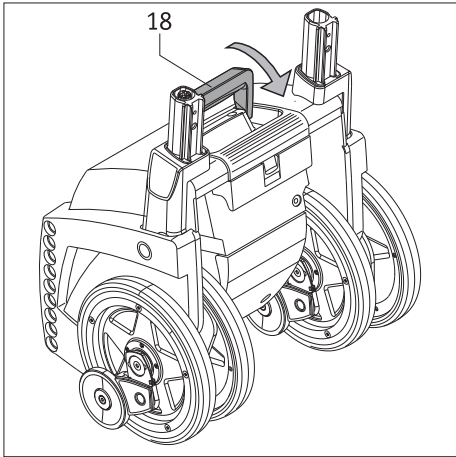
- Loosen the two lower knobs [8].
- Pull the handlebar up and off of the drive unit.



- Fold the footrest [23] upwards.



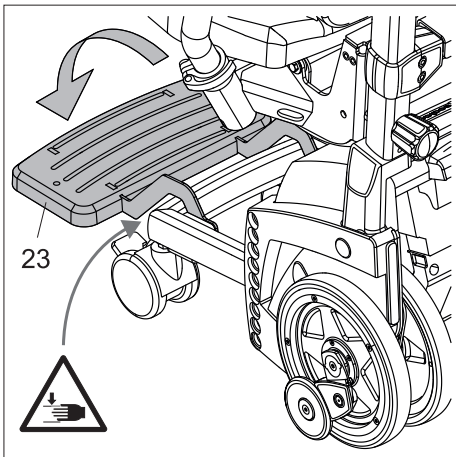
- Fold up the carry handle [18] to transport the drive unit.



7.4 scalacombi: putting individual components together

To reassemble and make the scalacombi ready for use after transport or storage, proceed as follows:

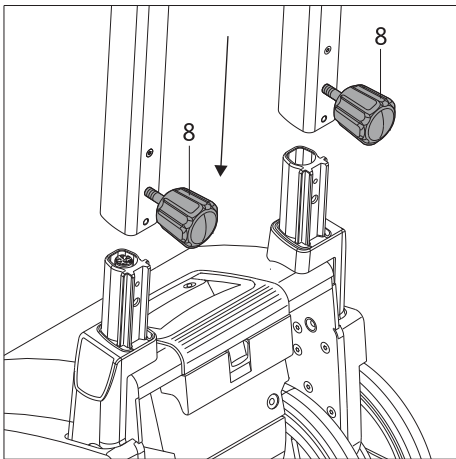
- Fold the carry handle [18] in.



- Fold the footrest [23] down.



**Caution: Do not let the footrest [23] drop down!
A falling footrest [23] could trap your finger or hand.**

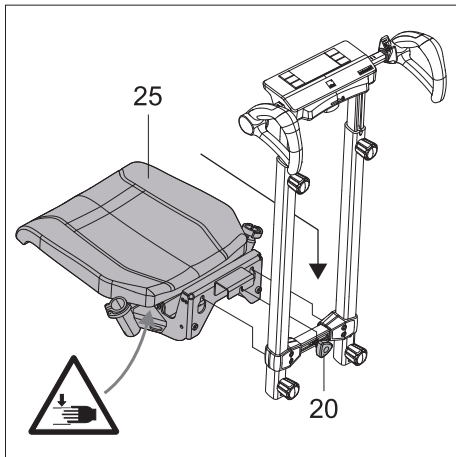


- Push the height adjustment tubes into the mounts on the scalacombi.
- Tighten the two lower knobs [8] again.



Attention: Do not turn the knobs excessively!

- Check that the height adjustment tubes are firmly attached to the scalacombi. It must not be possible to remove the tubes.



- Insert the seat unit with the seat surface [25] into the brackets on the cross strut of the handlebar from above (see also the detailed illustration).
- Make sure that the seat unit is correctly mounted on the cross strut (see also the detailed illustration).
- Tighten the seat knob [20].

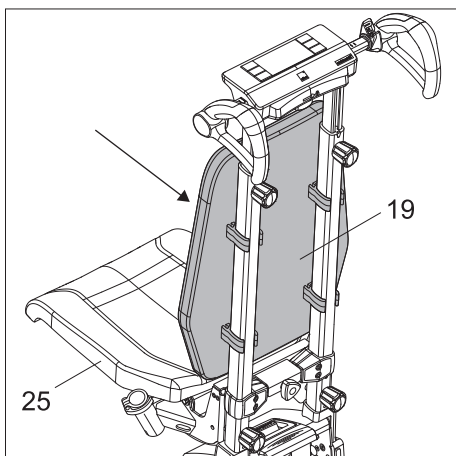
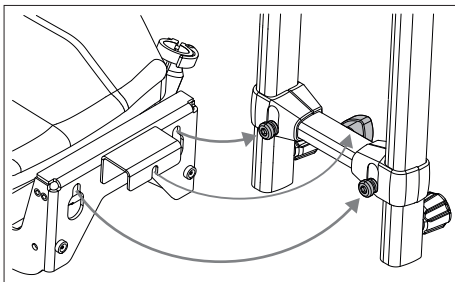


Exercise caution during installation: Grasp the seat unit at the bottom rear of the seat frame (on the part of the seat frame facing the cross strut) so that the seat surface [25] cannot accidentally fall down.

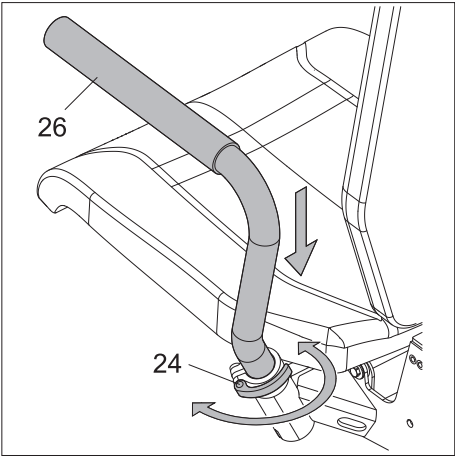
A falling seat [25] could trap your finger or hands.



Attention: Do not turn the knob excessively!



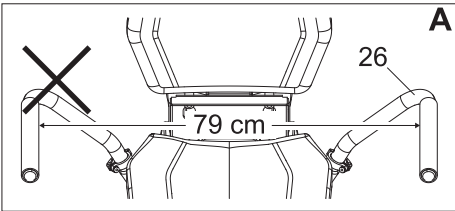
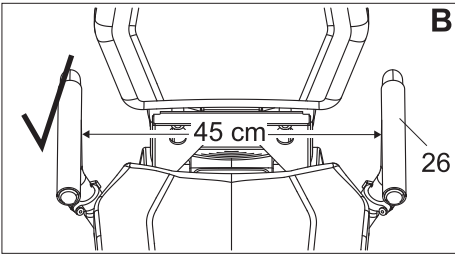
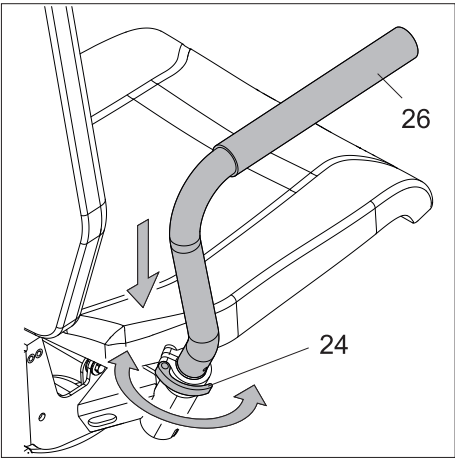
- Place the backrest [19] against the height adjustment tubes and push the backrest towards the tubes until the backrest brackets engage with the tubes.



- Loosen the clamps [24].
- Insert the armrests [26] into their brackets. If necessary, turn the armrests [26] slightly to the left or right until they slide down into their locked positions.
- Tighten the clamps [24] again.



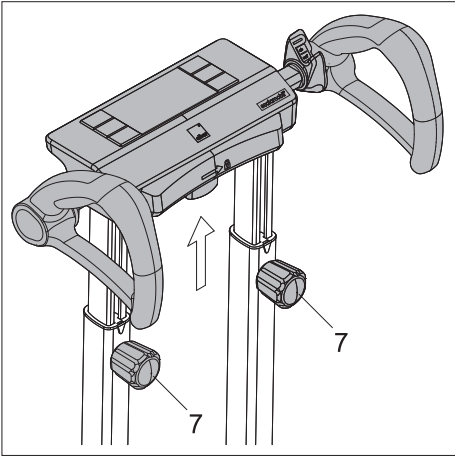
Before using the scalacombi, check whether the armrests [26] are secure, i.e. in the locked position (see chapter 2.3). Also check that the armrests are correctly mounted: The left armrest must be mounted on the left side of the scalacombi, the right armrest on the right (see Figure B). Interchanged and thus incorrectly mounted armrests: see Figure A.

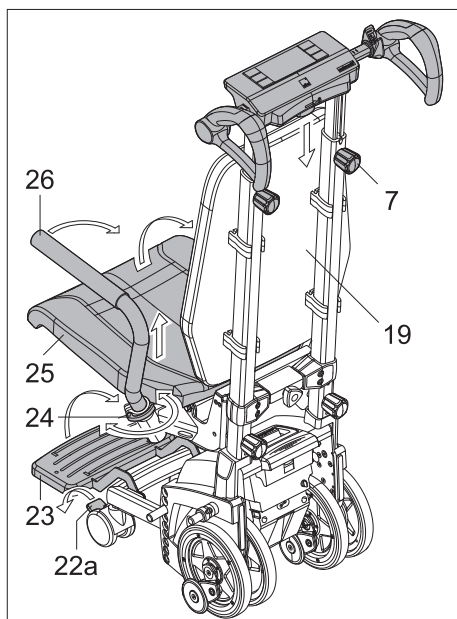


- Insert the battery pack [11] into the housing (see chapter 6.2).
- Loosen the upper knobs [7].
- Adjust the stair climber to the operator by pulling the height adjustment tubes apart, if necessary (see chapter 2.1).
- Tighten the two upper knobs [7].



Attention: Do not turn the knobs excessively!





7.5 Storing the scalacombi in a space-saving manner

To store the scalacombi in a space-saving manner, proceed as follows:

- Fold the seat [25] up.
- Loosen the clamps [24].
- Pull the armrests [26] up about 2 cm from their locked positions to allow you to turn the armrests [26].
- Keep the armrests [26] at this height and turn the armrests [26] towards the backrest [19].
Turn the armrests [26] carefully so that you do not trap your fingers or hands between the armrests [26] and the backrest [19].
- Tighten the clamps [24] again.
- Fold the footrest [23] upwards.
- Loosen the two height adjustment knobs [7].
- Push the height adjustment tubes together.
- Tighten the two height adjustment knobs [7] again.
- Apply the brakes [22a] so that the scalacombi cannot roll away inadvertently.

7.6 Using the scalacombi after space-saving storage

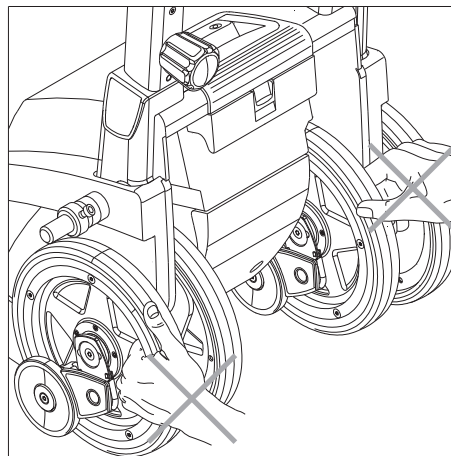
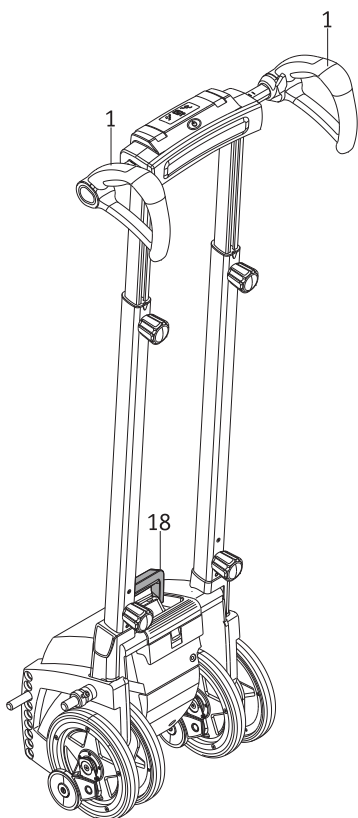
For information about using the scalacombi after space-saving storage, see chapter 2.

7.7 Instructions for storage and transport

7.7.1 Important safety information

Generally speaking, the stair climber is disassembled into individual components as described above. If disassembly is not necessary, please proceed as follows:

- Remove the battery pack [11] before transport to prevent the stair climber from being switched on inadvertently.
- Never reach into or reach into the inner [13] or outer [14] wheels of the device when transporting the stair climber.
- Only hold the stair climber by the handles [1] and [18].



7.7.2 Note on securing the device

During transport in a vehicle, the stair climber or its individual components must be secured so that they do not pose a risk to the vehicle occupants in the event of a braking manoeuvre. As a safeguard, we recommend that you secure the stair climber or its individual components in the vehicle using sufficiently stable fabric straps, for example. Please note that this is a non-binding recommendation (we accept no liability for the results of such action).

Please check whether there are specific regulations regarding the safeguarding of the stair climber and individual components in your jurisdiction; if there are, always adhere to these regulations.

Alber GmbH and its representatives accept no liability for any damage resulting from failure to comply with these instructions.



When not in use, store the stair climber in a vertical position indoors. Secure the device sufficiently to prevent it from falling over and potentially being damaged.

We recommend that you do not store the scalamobil on its side for long periods of time.

8. Indicators and error messages

The scalamobil is only equipped with the indicators on the display that were listed in an earlier chapter (chapter 2.7.4).

9. Troubleshooting in the event of a malfunction

What should I do if ...	Remedy	Contact ...
The brakes fail to engage properly during the functional test?	Clean the wheels and the brake drums with methylated spirit. Perform a further functional test.	
The brakes fail to engage properly even after cleaning?	Under no circumstances may you continue to use the stair climber.	Your specialist dealer or an Alber agent.
The battery is no longer charging?	This fault can only be remedied at the factory.	Your specialist dealer or an Alber agent.
The stair climber won't switch on?	If connected, disconnect the charger.	
The stair climber won't switch on even though the charger has been disconnected?	This fault can only be remedied at the factory.	Your specialist dealer or an Alber agent.
The stair climber stops while ascending or descending the stairs?	Put the stair climber down to the rear. The automatic safety brakes prevent it rolling over the edge of the stairs.	A second person to help you lift the stair climber up or down, step by step.
The drive switch [2] or the selection switch [6] is jamming?	Under no circumstances may you continue to use the stair climber.	Your specialist dealer or an Alber agent.
The error indicator [33] and the "manual" button/switch [31] flash on the display [3] and a beep sounds three times?	The device only works in the "manual" drive program.	Your specialist dealer or an Alber agent.
The error indicator [44] on the display [3] lights up and a beep sounds three times?	This fault can only be remedied at the factory.	Your specialist dealer or an Alber agent.
The error indicator [44] on the display [3] and the green LED of the "manual" drive program [42] flash and the beep sounds three times?	The stair climber works in the "manual" drive program. Press the switch for the "manual" drive program [42], then the error indicator [44] goes out and the green LED of the "manual" drive program lights up constantly. Continue in the "manual" drive program.	
The error indicator [44] flashes on the display [3]?	The stair climber can only descend. Charge the battery at the start of your ascent or descent.	
The error indicator [44] on the display [3] flashes, the "auto" and "assist" drive programs no longer work and the stair climber switches to the "manual" drive program?	If the three glass sensor covers at the bottom of the housing of the stair climber are dirty: Carefully clean the glass sensor covers, see chapter 11.1	If the glass sensor covers are not dirty or cleaning does not help: The sensors are defective, contact your specialist dealer or an Alber agent.



In the event of a problem or tyre damage, contact your specialist dealer.

10. Safety instructions and hazard information

10.1 General safety instructions and hazard information

When ascending or descending stairs, the safety and well-being of the person to be transported must always be the top priority. Therefore, carefully follow all safety instructions listed in the individual chapters as well as the following safety instructions. Please also observe the instructions and recommendations given to you by your specialist dealer or Alber agent during your device instruction session.

- Before putting the stair climber into operation, carefully read this operating manual for the stair climber. It contains the necessary information for operating the device as well as further safety instructions for ascending and descending stairs.
- The use of an optionally available lap belt or foot belt may be necessary in order to transport a person. It is the responsibility of the operator to check whether this equipment is necessary.
- Before and after ascending or descending stairs, the inner [13] and outer [14] wheels and the brakes [15] should be aligned with each other (see chapter 2.8.1).
- If a person gets into or out of the wheelchair attached to the scalamobil, the scalamobil must be switched off during this time to prevent inadvertent start-up.
- If a person gets into or out of the scalacombi, the scalacombi must be switched off during this time to prevent inadvertent start-up.
- If you take a seat on the scalacombi: Sit down on the seat first, then place your feet on the footrest. Stepping on the footrest of the unloaded (empty) scalacombi can cause the scalacombi to tip over.
- If the person being to be transported complains of nausea while ascending or descending the stairs, stop the ascent/descent as quickly as possible and then attend to the person.
- While ascending or descending stairs and the unusual tilting position associated with this, some people may experience tension in the neck area. We recommend attaching an optional headrest to the stair climber.
- The stair climber must never be let go of on a staircase; only in an emergency may it be put down to the rear.
- Always use the stair climber to approach a step or edge of a step sensitively, and avoid jerky movements. Observe the instructions for ascending and descending stairs received during the device instruction session (see also chapters 2 and 3).
- Theoretically, the stair climber can come to a stop at any time during operation. Therefore, always remain attentive when using the stair climber.
- If the "auto" drive program (see chapter 2.5.1) is activated and the stair climber is tilted, an ascent/descent can be triggered inadvertently if a sensor on the stair climber detects a foreign object (e.g. a foot).
- Basically, every ascent or descent must be completed once commenced. If an interruption is nevertheless absolutely necessary, place the stair climber to the rear of the step. Due to the safety brakes [14], rolling over the edge of the stairs is not a possibility. For details, see also chapter 3.10
- While ascending or descending the stairs, the person to be transported should sit still in a relaxed position. However, if the person should make any violent movements (e.g. due to a medical condition), interrupt the ascent or descent immediately. Place the stair climber to the rear of the step (see chapter 3.10). Attend to the person to be transport before continuing the ascent or descent.
- During transport, the person to be transported must keep their arms and hands on the armrests of the wheelchair or scalacombi or close to their body.
- Make sure that the person to be transported allows their arms to rest in a relaxed position on the armrests of the wheelchair during a transfer or while ascending or descending the stairs. Under no circumstances should the armrests be held tightly as, depending on the wheelchair model, there may be a risk of them being pulled out inadvertently.
- The two armrests attached to the scalacombi serve, among other things, as a lateral limitation and may be used as an armrest. The armrests must not be loaded with more than 50 kg per side.
- The armrests of the scalacombi must not be loaded on one side (risk of tipping).
- Never sit on the armrests of the scalacombi.
- Before using the scalacombi, check that the armrests are seated correctly in their mounts. The armrests must not swivel without first loosening the clamps [24] and raising the armrests.
- The armrests of the scalacombi must not be removed or swiveled while ascending or descending the stairs.
- The stair climber may only be used with the specially adapted accessories.
- Never use the stair climber on stairs with wet, slippery or waxed surfaces or with loosely laid carpets or rugs.
- Never use the stair climber outdoors on stairs with wet, slippery, icy, or with foliage or paper soiled surfaces.
- You should exercise particular caution when ascending or descending stairs where all or part of the steps are made of gratings. Before ascending or descending stairs, you must first carry out a test run with the scalamobil (without the wheelchair user!). If the brakes of the stair climber are not functional, the stairs must not be used under any circumstances.
- Use the stair climber only on stairs with a minimum step depth of 11 cm and a maximum step height of 20 cm.
- The operator of the stair climber must wear closed and non-slip footwear when ascending or descending stairs.
- Never let go of the handles [1] while ascending or descending stairs.
- Do not wear gloves when ascending and descending the stairs as they might get caught on the control elements, especially the drive switch.

- While ascending and descending stairs, the wheelchair user or the person sitting on the scalacombi must not hold on to the banister or railing.
- Never reach into the rotating wheels when ascending or descending stairs or during cleaning work.
- Make sure that no foreign objects (e.g. stones) get caught in the drive or the brakes.
- Therefore, check the stair climber for such foreign objects before ascending or descending stairs to ensure that the device is fully functional.
- While ascending or descending stairs, neither the operator of the stair climber nor the person to be transported must be under the influence of alcohol or drugs. Similarly, any medication taken must not affect the operator's ability to use the device.
- The stair climber must not be operated in the presence of flammable gases.
- Be sure to contact a specialist dealer if the stair climber vibrates unusually strongly or makes unusually loud noises.
- Make sure to contact a specialist dealer if liquids or lubricants leak from the stair climber.
- Your stair climber is equipped with a set of powerful batteries that allow you to climb up to 200 steps. After each use of the stair climber, however, the batteries should be recharged to prevent unwanted stopping on a stairs due to empty batteries.
- The stair climber may only be used at temperatures between -25 °C and +50 °C to ascend or descend stairs.
- The use of the scalamobil with attached wheelchair or the scalacombi as a transfer system for short distances to and from stairs is permitted.
- If the stair climber hits an obstacle, it can suddenly tilt forward or get stuck. For this reason, you should always remain attentive when using it.
- The stair climber may only be switched off on level ground; under no circumstances may it be switched off when ascending or descending stairs. See also instructions in chapter 3.9.
- If the wheelchair is retrofitted with an e-fix, an e-motion or a viamobil in addition to the scalamobil, please note that the travel characteristics of the scalamobil can change significantly when ascending or descending stairs due to the possibly changed centre of gravity.
- Make sure that pets do not disturb the operator of the stair climber while ascending or descending stairs and make sure that there are no pets on the stairs in question. Similarly, pets may not be transported together with the person sitting in the wheelchair or on the scalacombi and may not be chained to the wheelchair or scalamobil or scalacombi.
- For transport and before starting any cleaning work, the battery pack must be removed from the stair climber (and if the battery has a fault and is to be transported to the service department).
- Do not hang any items of clothing, bags or similar on the handles, as this could impair individual functions of the control elements or trigger them inadvertently.
- While ascending or descending stairs, always hold the stair climber with both hands and do not release the handlebar.
- Do not apply hand cream or other such product before ascending or descending stairs.
- Your hands must be free of grease to prevent you accidentally losing your grip on the handles.
- Take care of your hands and fingers when adjusting the height of the handlebar. Do not squeeze your hands or fingers into the profile tubes.
- When storing the stair climber, ensure a dry environment that is also protected from splash water.
- In unprotected outdoor areas, the stair climber should not be used in the event of rain or the scalamobil should not be left hanging from a wheelchair.

10.2 Safety instructions and hazard information on the stair climber

The stickers attached to the stair climber indicate the following:



Read this operating manual carefully prior to the first independent use of the stair climber. The stair climber must only be operated by persons who have participated in a device instruction session provided by the specialist dealer or an Alber agent. Let your specialist dealer or Alber agent advise you in detail about the function of the stair climber and how to ascend and descend stairs during the device instruction session, and also ascend or descend stairs in order to get to know the operating behaviour.

11. Cleaning and care, maintenance, further use, storage and disposal

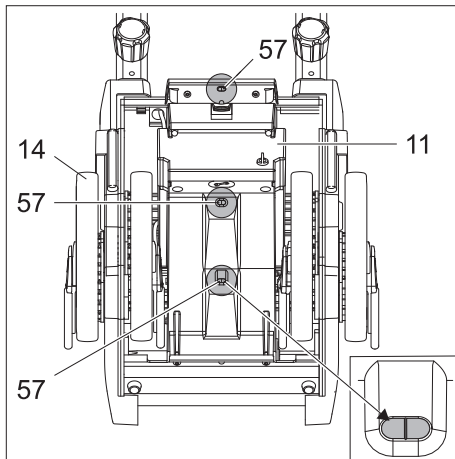
Before starting any cleaning or maintenance work, the battery pack [11] must be removed from the drive unit (see chapter 6.2).

11.1 Cleaning and care

The inner [15] and outer [16] wheels and their inner knurled treads [38] must be cleaned regularly with spirit to ensure optimum brake performance. With daily use of the stair climber, you should clean these parts once a week, with less heavy use once a month. During the safety inspection, which must be carried out at least every 2 years, the drive wheels and the brakes are tested and worn parts are replaced, if necessary. All other components can be cleaned with a mild conventional household detergent.

Only damp – never wet – cloths may be used for all cleaning processes.

Always ensure that no liquids or moisture get inside the device.



Carefully clean the three glass sensor covers [57] at the bottom of the drive housing of the stair climber if they are dirty: Wipe the glass sensor covers [57] with a dry or damp (not wet!) plastic-free cotton swab. If the contamination is persistent: Soak the dirt before wiping by placing a damp (not wet!) cloth or damp (not wet!) plastic-free cotton buds on the glass sensor covers for a while.



Attention: During cleaning, sand grains or similar dirt as well as the application of strong pressure and/or rubbing back and forth can cause the glass sensor covers [57] to scratch. Therefore, clean the glasses [57] carefully, do not rub back and forth and, if necessary, soak stubborn dirt before wiping.

11.2 Maintenance

Your stair climber is an extremely low-maintenance device. Nevertheless, you should check all attachment and accessory parts, especially the knobs, at regular intervals to ensure that they are firmly seated and secured. No later than every 2 years, your stair climber must also undergo an expert inspection and, if necessary, maintenance work. This is to check that it is fully functional and safe and to ensure such a state continuously.

During this inspection, damage resulting from use of the system that cannot be detected externally as well as signs of wear and fatigue can be identified. To arrange for such an inspection, contact your (Alber) specialist dealer directly.

In any case, we strongly recommend that you clarify beforehand to what extent the costs are covered by your health insurance provider, especially with regard to any existing contracts.

With the exception of the battery pack, the two tyres and the brakes, no part of the drive is subject to significant wear. In order to transfer the drive and brake force of your scalamobil safely at all times, the inner [13] and outer [14] wheels must only be used with an adequate tread pattern (no cracks!) and the brakes [15] must only be applied with sufficient brake force.



Service work and repair work on the stair climber may only be performed by authorised specialist dealers, an Alber GmbH agent, or by Alber GmbH. If you encounter any problems with your scalamobil, contact your specialist dealer.

11.3 Reuse

If your stair climber has been provided to you by your health insurer and you do not need it any longer, please contact your health insurer or specialist dealer. Your stair climber can then be easily and efficiently reused.

- Depending on the condition of the device, Alber recommends carrying out a safety inspection before each reuse. No later than every 2 years, your stair climber must undergo an expert safety inspection to check that it is fully functional and safe.
- In addition to the cleaning instructions given in chapter 11.1, all externally accessible plastic parts, the handles, the wheels and any optionally purchased accessories must be disinfected before reuse. To do this, use a detergent suitable for wet disinfection and follow the manufacturer's instructions.

11.4 Storage

If your wheelchair and the scalamobil are going to be stored or if the scalacombi is going to be stored for an extended period of time (e.g. several months), please observe the following points:

- Store the wheelchair according to the wheelchair manufacturer's specifications.
- Protect the components of the stair climber with film in order to keep moisture out.
- Store the wheelchair and all components of the stair climber in a dry room.
- Ensure that no moisture penetrates into or drips onto the wheelchair or stair climber components.
- Ensure that the wheelchair and stair climbers are not continuously exposed to solar radiation (e.g. through windows).
- Ensure that unauthorised persons (especially children) do not have unsupervised access to this room.
- Follow the instructions for storing the battery pack.
- Alber recommends removing the battery pack for longer storage.
- The wheelchair and the components of the stair climber must be cleaned prior to recommissioning.
- Check whether a safety inspection is required before recommissioning and arrange this inspection if necessary.

11.5 Disposal



This device, its battery pack and accessories are durable products.

Nevertheless, they may contain substances that are hazardous to the environment if the parts are disposed of in locations (e.g. landfills) that are not intended for the disposal of such materials according to the applicable statutory regulations for the country in question.

The product is labelled (in accordance with the WEEE Directive) with a "crossed-out rubbish bin" symbol, reminding you that it must be recycled.

Please protect the environment and return the product at the end of its service life to your local recycling centre.

As this product is not covered by the regulations of the WEEE Directive in all European countries, please familiarise yourself with the applicable waste disposal regulations in your country.

Alternatively, return these components to a specialist Alber dealer or Alber for proper and environmentally sound disposal.

12. Warranty, guarantee and liability

12.1 Warranty for defects

Alber guarantees that the stair climber is free of defects at the time of transfer. This warranty expires 24 months after the date of delivery of the stair climber.

12.2 Durability guarantee

The durability guarantee for the stair climber is 24 months (for batteries 12 months) and begins on the day the device is handed over to the purchaser. Not included in the durability guarantee:

- Parts subject to wear
- Maintenance work required by daily use
- Defects caused by normal wear, incorrect handling including failure to comply with the instructions in this operating manual, accidents, reckless damage, and damage caused by fire, water, force majeure and other events that are outside the control of Alber GmbH.
- Device inspection without detection of a fault or defect.
- Devices whose serial number has been tampered with, defaced or removed.

The General Business Terms and Conditions of Alber GmbH apply.

12.3 Liability

As the manufacturer of the stair climber, Alber GmbH shall not be liable for the safety of the stair climber if

- the stair climber is handled incorrectly.
- the stair climber is not serviced at the prescribed two-year intervals by an authorised specialist dealer or by Alber GmbH.
- the stair climber is operated in contravention to the instructions in this operating manual.
- the stair climber is operated with an insufficient battery charge.
- the stair climber is repaired or modified by persons not authorised to carry out such work.
- third-party parts are attached to or combined with the stair climber.
- parts of the stair climber are removed.

13. Technical data

scalamobil S45 / scalacombi S46	
Classification according to ISO 7176-28	scalamobil S45: Type D scalacombi S46: Type C
Drive unit	
Floor clearance of drive unit:	44 cm
Width of drive unit:	37 cm
Overall height:	117 – 165 cm
Overall width:	43 cm (handles closest together)
Length	S45: 30 cm S46: 49 cm
Weight without handlebar:	S45: 17.9 kg (without battery) / S46: 22.3 kg
Weight with handlebar:	S45: 26 kg / S46: 38 kg
Weight of handlebar:	4.9 kg
Motor voltage:	24 Volt
Climbing speed (*):	up max. 18 steps/minute – down max. 22 steps/minute
Range per battery charge (**):	200 steps
Max. weight of person (*):	140 kg
Max. load (transport weight, i.e. wheelchair incl. person to be transported and incl. scale and accessories):	S45, S46: 180 kg S45 with scalaport X7: 160 kg
Required force for tilting:	approx. 165 N (at maximum load)
Required force for pushing or turning on level ground:	approx. 60 N (at maximum load)
Battery pack (integrated)	
Battery type:	VRLA (valve-regulated lead-acid battery)
Battery capacity:	3.4 Ah
Weight of battery pack:	3 kg
Charger	
Model/type:	BC 2410LA
Input voltage:	90-265 VAC
Rated output voltage:	24 VDC
Charging current:	1 A
Use:	Only in conjunction with the battery pack listed above

- All electrical components of the scalamobil are protected against the ingress of splash water and moisture.
- Some of the specifications listed above have been calculated using applicable standards and test dummies with a weight of 141 kg. Nevertheless, some of the values produced during operation of the scalamobil may differ from the specifications provided.
- (*) This value indicates the upper technical limit and depends on the wheelchair model. The suitability of the operator can also reduce this value.
- (**) The range and climbing speed vary depending on the prevailing travel conditions and the weight of the person. The specified range can be achieved under optimum travel conditions (freshly charged batteries, ambient temperature of 20 °C, smooth movements, etc.).

Charger

For technical information and other information on charging, please refer to the separate operating manual for the charger.



The scalamobil and the corresponding off-board charger comply with the applicable sections of ISO 7176-28 and the EU Medical Devices Directive (MDR) 2017/745. The scalamobil is a Class I medical device.

14. Product labelling

There are labels on the components of the scalamobil which include various product details. In the event of a device defect, individual components can be replaced by your specialist dealer as part of the Alber exchange parts pool. For this purpose, your specialist dealer will require certain items of information from the labels. The following illustrations are for example purposes only.

Systemnr. / System No.	S45230001	 2023-09-06
Produkt [Product]	Scalamobil S45	
Betriebsspannung [Nominal Voltage]	24 V	
Motor Nennleistung [Rated Power]	200 W	
Max. Geschwindigkeit [Max. Speed]	18 [steps]/min	
Batterie Typ [Battery Type]	Blei-Gel [Lead]	
Batterie Nennkapazität [Rated Capacity]	3,4 Ah	
Alber GmbH Vor dem Weissen Stein 14 D-72461 Albstadt Made in Germany		(01)04046727236670 (11)230906 (21)S45230001

System label

The system label provides information on the key technical data of the scalamobil and makes it possible, if necessary, to trace the system. Your specialist dealer needs the system number specified at the top of the system label (S45230001 or S46230001 in the example diagrams) in the event of a device exchange as part of the Alber exchange parts pool.

The system label can be found in the slot on the battery pack in the drive unit (please refer to the battery pack).

System label scalamobil S45

Systemnr. / System No.	S46230001	 2023-09-06
Produkt [Product]	Scalacombi S46	
Betriebsspannung [Nominal Voltage]	24 V	
Motor Nennleistung [Rated Power]	200 W	
Max. Geschwindigkeit [Max. Speed]	18 [steps]/min	
Batterie Typ [Battery Type]	Blei-Gel [Lead]	
Batterie Nennkapazität [Rated Capacity]	3,4 Ah	
Alber GmbH Vor dem Weissen Stein 14 D-72461 Albstadt Made in Germany		(01)04046727236687 (11)230906 (21)S46230001

System label scalacombi S46

Wartung Maintenance			
am/at:			
durch/by:			
in (PLZ)/in:			
01	nächste	07	
02	next	08	
03		09	
04		10	
05		11	
06		12	
2026	2027	2028	2029

“Maintenance” label

This label indicates the time of the next maintenance due. It is on the left-hand housing wall inside the drive unit.

1520387	410102010
1010151539	
4046727145002	

Component labels

These are used to identify various assemblies of the scalamobil and are located on the handlebar, on the left inner side of the drive unit, on the battery pack and on the underside of the charger. Your specialist dealer needs the component number (number in the middle of the label, marked with an arrow in the diagram opposite) when replacing the assembly as part of the Alber exchange parts pool.

Bitte vergessen Sie nicht, die Akku-Packs nach jedem Gebrauch nachzuladen, um deren volle Leistungsfähigkeit zu erhalten / Please make sure that the battery packs are recharged after each partial discharge i.e. after each use, to maintain their full capacity.

Spannung: 24 V
Voltage: 24 V
Ladetemperatur: 0 °C ... + 40 °C
Charging Temperature:
32 °F ... 104 °F

alber
Alber GmbH
Vor dem Weißen Stein 14
72461 Albstadt, Germany
Phone: +49 7432 2006-0
Fax: +49 7432 2006-299

Darf nur vom autorisierten Fachhandel geöffnet werden. / To be opened by authorized technician only.

Kurzschluss vermeiden / Avoid short circuits
Nur Original-Ladegerät gemäß Gebrauchsanweisung verwenden. / Use only genuine charger provided with the unit.

Beachten Sie die Hinweise zum Laden und zum Transport in der Gebrauchsanweisung / For charging and transportation read instructions for use

Battery pack labelling

The information shown in the diagram opposite is engraved on the reverse of the battery pack.

alber Alber GmbH
www.alber.de

ACHTUNG! Vor der Benutzung ist die Gebrauchsanweisung zu lesen. Nur zur Verwendung in trockenen Räumen. Von Nicht-Experten, bevor Verbindungen zum Akkumulator geschlossen oder geöffnet werden.
Explosive Gas, Flammen und Funken vermeiden. Für ausreichende Belüftung sorgen. Ausschließlich zu Ladung von Blei-Gel-Akkumulatoren. Bei der Verwendung anderer Akkumulatoren besteht Explosionsgefahr.
CAUTION! Read user manual before use. Must not be used outside for use in dry rooms only. Disconnect the supply before making or breaking the connection to the battery.
WARNING: Explosive gases. Prevent flames and sparks. Provide adequate ventilation. Use only LEAD GEL type rechargeable batteries, other types may explode.
ATTENTION! Lire le mode d'emploi avant d'utiliser l'appareil. Utiliser uniquement à l'intérieur dans un endroit sec. Veuillez débrancher l'alimentation avant de connecter ou déconnecter les batteries.
AVERTISSEMENT: Ne pas utiliser dans des pièces humides ou étouffées. Fournir une ventilation adéquate. Utiliser uniquement des piles rechargeables sèches au plomb, les autres types de piles risquent d'exploser.

警告! 使用する前に詳細な説明書をお読みください。乾燥した部屋でのみ使用してください。非専門家による接続と切断は、接続を断つてください。爆発性ガス、炎、火花を発生させない。十分な換気を確保してください。鉛酸ゲル電池の充電専用です。他の種類の電池を使用すると、爆発の原因となります。

BATTERY CHARGER
Gerätetyp/ type reference/ モデル: BC2410LA
Ausgangsnennspg./ rated output voltage/ 出力電圧: 24V=±
Ausgangsstrom/ rated output current/ 出力電流: 1A
Eingangsnennspg./ rated input voltage/ 入力電圧: 100 - 240V-50-60Hz
Aufnahmestrom/ input current/ 入力電流: 0,7 - 0,3A
Schutzart/ degree of protection/ 保護等級: IP 31
OEM Hersteller/ manufacturer/ 製造元: inpotion
OEM Artikelnummer/ part no./ 部品番: PSU-0631-03

Class 2 Battery Charger
Alber Japan Co., Ltd.

“Technical data” label on the charger

The label shown opposite is located on the underside of the charger and provides information about its technical data.

15. Product safety information

All components of your scalamobil have undergone functional tests and extensive inspections. Should unforeseeable impairments nevertheless occur during operation of the scalamobil, corresponding safety information would be available to customers on the following web pages in a timely manner:

- Homepage of Alber (manufacturer of the scalamobil)
- Homepage of the German Federal Institute for Drugs and Medical Devices [BfArM]

If corrective measures are necessary, Alber will notify the specialist dealer, who will then contact you.

16. Product service life

We expect an estimated average service life of five years for this product, provided that the product is used as intended and maintained and serviced in accordance with all the instructions specified in the operating manual. This service life can be extended by handling, servicing, maintaining and using the product with care and if there are no technical limitations that arise from further developments in science and technology. However, the service life may also be reduced significantly by excessive or improper use. The service life required by the applicable standards does not constitute an additional warranty.

17. Important legal information for the user of this product

Incidents that occur due to product malfunctions and result in serious personal injury are to be reported to the manufacturer and the competent authority of the EU Member State in which the user is established.

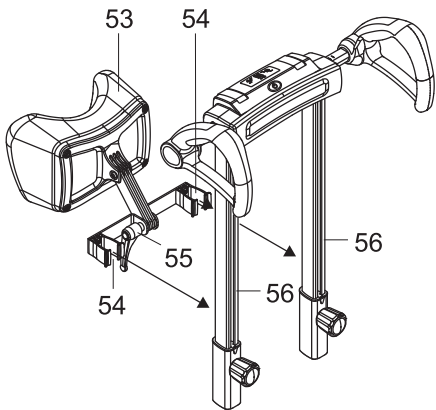
With regard to the Federal Republic of Germany, these are:

- Alber GmbH (see the back of this operating manual for details of the address)
- The German Federal Institute for Drugs and Medical Devices (BfArM),
Kurt-Georg-Kiesinger-Allee 3
53175 Bonn
www.bfarm.de

With regard to EU Member States, please notify:

- Your Alber dealership (see the back of this operating manual for details of the address)
- The authorities in your country responsible for incidents involving medical devices

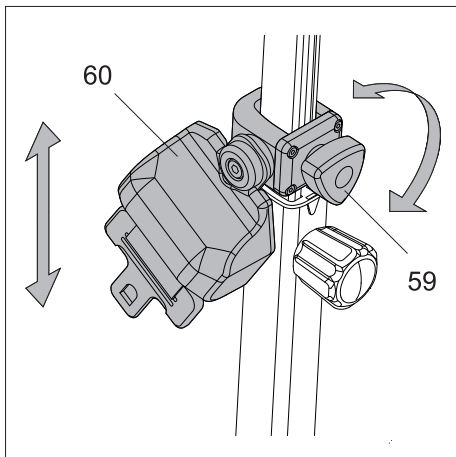
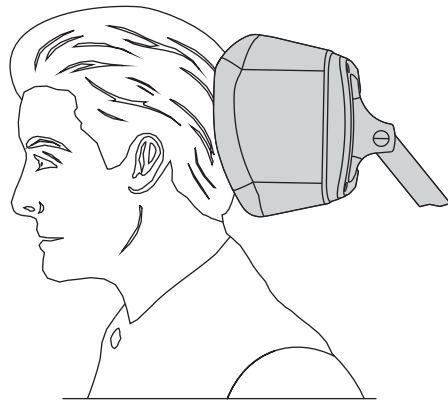
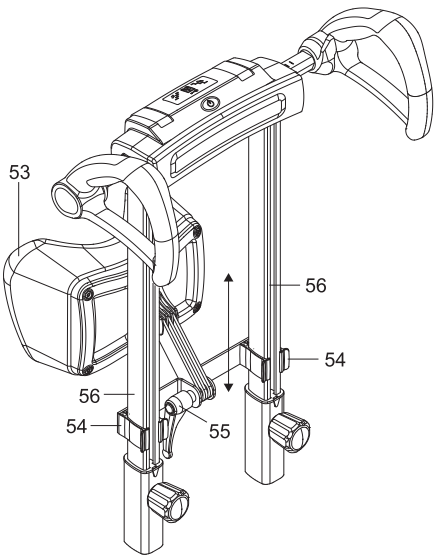
An overview of the competent authorities can be viewed online at: <http://ec.europa.eu/growth/sectors/medical-devices/contacts/>



Securing and adjusting the headrest on the stair climber

Headrests [53] are available from Alber as optional accessories and are clamped to the tubes [56] of the stair climber using the two clamps [54]. The desired position can be adjusted by shifting the headrest [53] on the tubes [56] and by opening or closing the clamping lever [55] on the person to be transported with the stair climber.

Alber GmbH recommends using a headrest if the stair climber is equipped with it.



Adjusting the chest harness on the scalacombi

Alber offers the chest harness as an accessory for the scalacombi S46. Please contact your specialist dealer regarding installation of the chest harness on the scalacombi S46.

Adjust the optional chest harness as follows:

- Loosen a star knob [59].
- Put the strap [60] at the required height, according to the size of the person to be transported.

Attention: Ensure that the straps are routed over the chest and shoulder area and not over the throat area.

- Tighten the star knob [59] again.

- Repeat the steps described above to adjust the height of the second strap.

Installing the chest harness on the scalacombi



Important safety information

Work on the scalacombi S46 and its individual components may only be performed by persons who have been authorised by Alber to perform this specific work.

Important

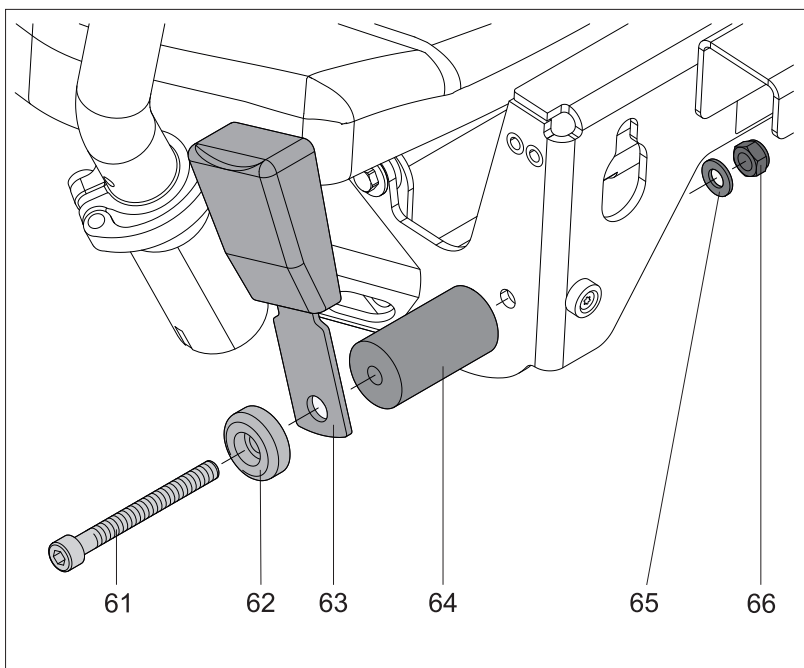
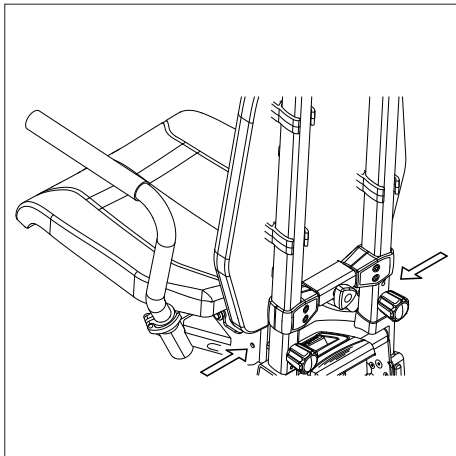
These installation instructions inform you about the basic installation steps to be observed when attaching the chest harness to the scalacombi S46.

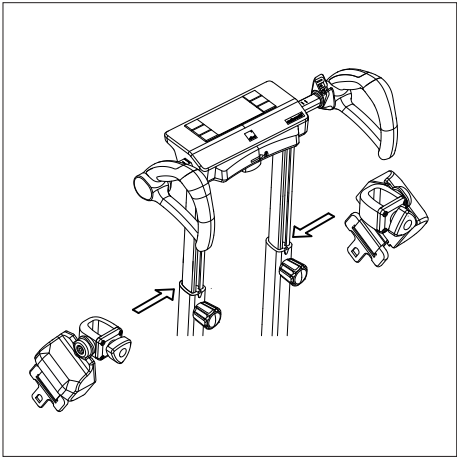
1. Preparing for installation

- Switch off the scalacombi S46; see chapter 2.7.1 of the operating manual.
- Actuate the parking brakes of the castors of the scalacombi S46; see chapter 2.13 of the operating manual.

2. Installing the buckles on the seat unit

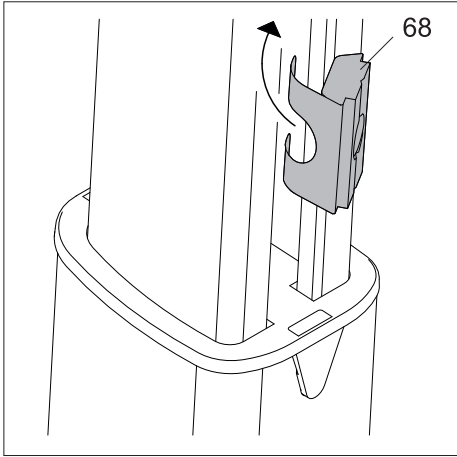
- Installation positions: see the adjacent drawing
- Attach a disc [62], a buckle [63] and a spacer [64] to the seat unit using an M8x80 bolt [61], a washer [65] and an M8 nut [66] as shown in the drawing.
- Tighten the M8x80 bolt [1] with a torque of 10 Nm.
- Repeat installation with the second buckle [63] on the other side of the seat unit.



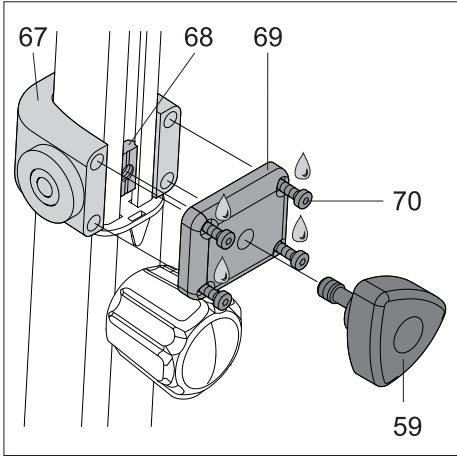


3. Attaching the chest harness to the handlebar

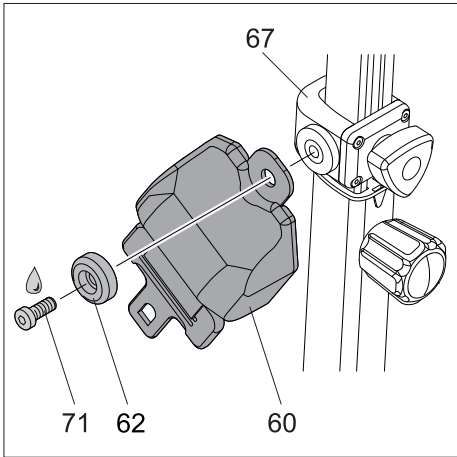
- Push the handlebar up slightly; see chapter 2.1 of the operating manual.
- Installation positions: see the adjacent drawing
Install the straps in such a way that they face outwards (see the adjacent drawing).



- Insert a slot nut [68] into the groove on the tube (see drawing) and align the slot nut [68].



- Attach a strap keeper [67] to the tube in such a way that the disc, and subsequently the chest harness [60], points outwards (see the drawings).
- Put a plate [69] for the strap keeper [67] on a star knob [59].
- Screw a star knob [59] into a slot nut [68].
- Apply one drop of Loctite 243 or Weicon 302-43 threadlocker to four M4x14 bolts [70].
- Fasten the plate [69] to the strap keeper [67] by tightening the four M4x14 bolts [70] with a torque of 0.9 Nm.



- Apply one drop of Loctite 243 or Weicon 302-43 threadlocker to an M8x20 bolt [71].
- Fasten the disc [62] and the strap [60] to the strap keeper [67] by tightening the M8x20 bolt [71] with a torque of 2.2 Nm.

- Repeat the previous steps from chapter 3 on the other tube to install the second chest harness.

Installing the automatic lap belt on the scalacombi



Important safety information

Work on the scalacombi S46 and its individual components may only be performed by persons who have been authorised by Alber to perform this specific work.

Important

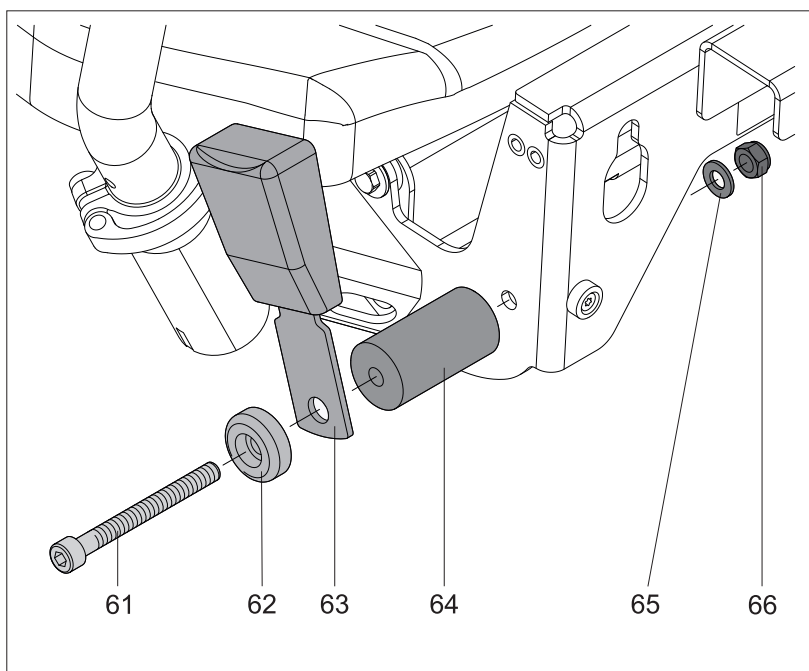
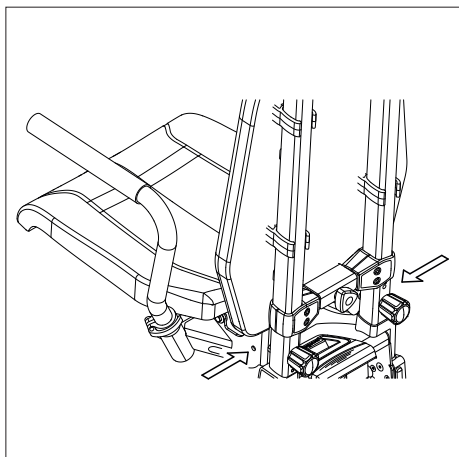
These installation instructions inform you about the basic installation steps to be observed when attaching the automatic lap belt to the scalacombi S46.

1. Preparing for installation

- Switch off the scalacombi S46; see chapter 2.7.1 of the operating manual.
- Actuate the parking brakes of the castors of the scalacombi S46; see chapter 2.13 of the operating manual.

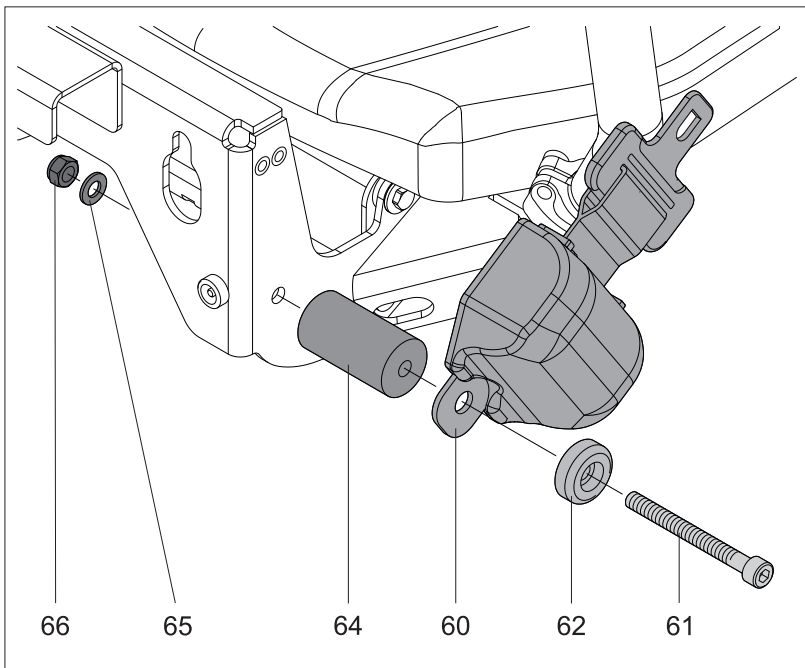
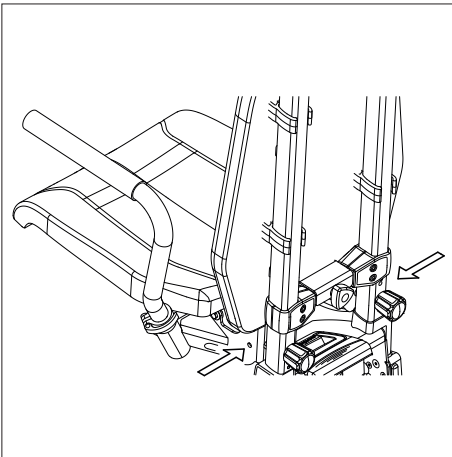
2. Installing the buckle for the seat unit

- Installation positions for buckle and strap: see the adjacent drawing
- Attach a disc [62], the buckle [63] and a spacer [64] to the seat unit using an M8x80 bolt [61], a washer [65] and an M8 nut [66] as shown in the drawing.
- Tighten the M8x80 bolt [61] with a torque of 10 Nm.



3. Installing the automatic lap belt on the seat unit

- Installation positions for buckle and strap: see the adjacent drawing
- Attach a disc [62], the strap [60] and a spacer [64] to the seat unit using an M8x80 bolt [61], a washer [65] and an M8 nut [66] as shown in the drawing.
- Tighten the M8x80 bolt [61] with a torque of 10 Nm .



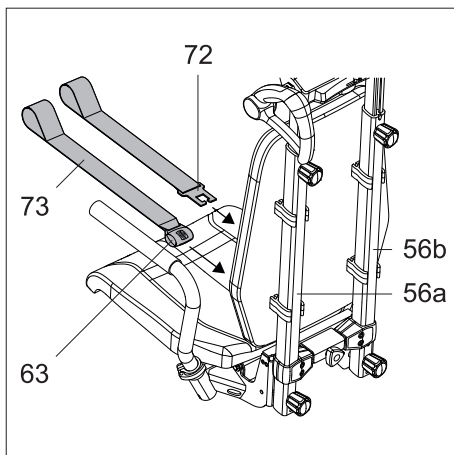
Installing the static lap belt on the scalacombi

Important

These installation instructions inform you about the basic installation steps to be observed when attaching the static lap belt to the scalacombi S46.

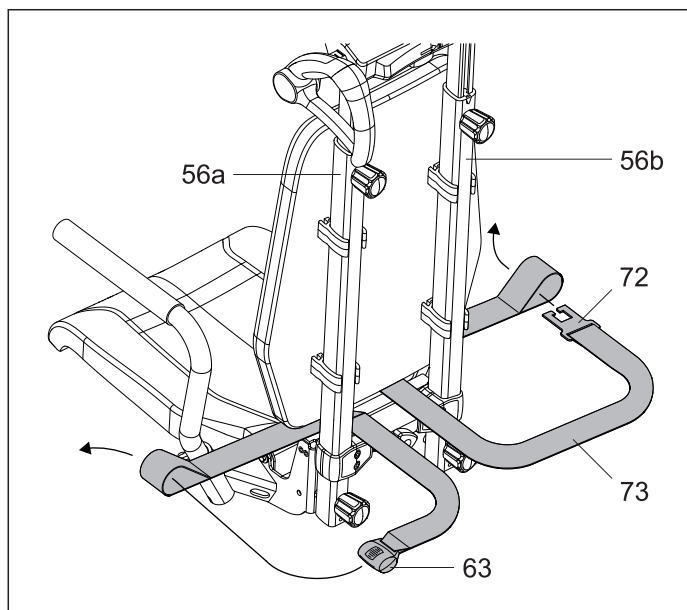
1. Preparing for installation

- Switch off the scalacombi S46; see chapter 2.7.1 of the operating manual.
- Actuate the parking brakes of the castors of the scalacombi S46; see chapter 2.13 of the operating manual.
- Install the belt before anyone takes a seat on the scalacombi.



2. Installing the belt strap with the tongue and the belt strap with the buckle on the handlebar

- Attach the belt strap [73] with buckle [63] to a tube [56a] (see drawings) and tighten the strap.
- Attach the belt strap [73] with the tongue [72] to the other tube [56b] (see drawings) and tighten the strap.
- Ensure that the straps are tightened properly.



Note:

You can also install the belt strap [73] with buckle [63] on the right-hand tube [56b] and the belt strap [73] with tongue [72] on the left-hand tube [56a], i.e. the other way round, as shown in the drawings.

Ihre Alber-Vertretung / Your Alber representative / Votre représentation Alber /
Vostra rappresentanza Alber / Su representación Alber / Din Alber representant /
Din Alber-agenturene / Uw distributeur Alber / Deres Alber-repræsentation



Alber GmbH

Vor dem Weißen Stein 14

72461 Albstadt-Tailfingen

Telefon +49 (0)7432 2006-0

Telefax +49 (0)7432 2006-299

info@alber.de

www.alber.de